

Anti-SEN7 antibody

Cat. No.	ml123124
Package	25 µl/100 µl/200 µl
Storage	-20°C, pH7.4 PBS, 0.05% NaN ₃ , 40% Glycerol

Product overview

Description	Anti-SEN7 rabbit polyclonal antibody
Applications	ELISA, WB
Immunogen	Fusion protein of human SEN7
Reactivity	Human, Mouse, Rat
Content	0.5 mg/ml
Host species	Rabbit
Ig class	Immunogen-specific rabbit IgG
Purification	Antigen affinity purification

Target information

Symbol	SEN7
Full name	SUMO1/sentrin specific peptidase 7
Synonyms	
Swissprot	Q9BQF6

Target Background

The reversible posttranslational modification of proteins by the addition of small ubiquitin-like SUMO proteins (see SUMO1; MIM 601912) is required for many cellular processes. SUMO-specific proteases, such as SEN7, process SUMO precursors to generate a C-terminal diglycine motif required for the conjugation reaction.

订购热线: 4008-898-798

Applications

Western blotting

Predicted band size:120 kDa

Positive control:A172 and 231 cells

Recommended dilution: 1000-5000

Gel: 6%SDS-PAGE

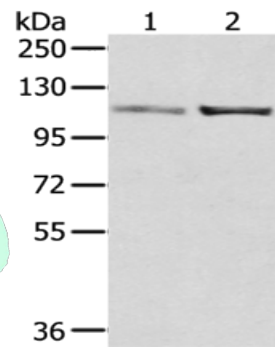
Lysate: 40 µg

Lane 1-2: A172 cells, 231 cells

Primary antibody: ml123124(SENP7 Antibody) at dilution 1/800

Secondary antibody: Goat anti rabbit IgG at 1/8000 dilution

Exposure time: 30 seconds



ELISA

Recommended dilution:2000-10000

联系电话: 4008-898-798, 021-61725725

联系QQ: 2881505695, 2881505696

邮箱: mlbio_cn@yeah.net

网址: www.mlbio.cn