

## Anti-SLC29A4 antibody

|                 |   |
|-----------------|---|
| <b>Cat. No.</b> | ml123168  |
| <b>Package</b>  | 25 µl/100 µl/200 µl                                     |
| <b>Storage</b>  | -20°C, pH7.4 PBS, 0.05% NaN <sub>3</sub> , 40% Glycerol |

### Product overview

|                     |   |
|---------------------|---|
| <b>Description</b>  | Anti-SLC29A4 rabbit polyclonal antibody |
| <b>Applications</b> | ELISA, WB                               |
| <b>Immunogen</b>    | Fusion protein of human SLC29A4         |
| <b>Reactivity</b>   | Human                                   |
| <b>Content</b>      | 0.2 mg/ml                               |
| <b>Host species</b> | Rabbit                                  |
| <b>Ig class</b>     | Immunogen-specific rabbit IgG           |
| <b>Purification</b> | Antigen affinity purification           |

### Target information

|                  |   |
|------------------|---|
| <b>Symbol</b>    | SLC29A4   |
| <b>Full name</b> | solute carrier family 29 (equilibrative nucleoside transporter), member 4 |
| <b>Synonyms</b>  | ENT4; PMAT  |
| <b>Swissprot</b> | Q7RTT9  |

### Target Background

This gene encodes a member of the SLC29A/ENT transporter protein family. The encoded membrane protein catalyzes the reuptake of monoamines into presynaptic neurons, thus determining the intensity and duration of monoamine neural signaling. It has been shown to transport several compounds, including serotonin, dopamine, and the neurotoxin 1-methyl-4-phenylpyridinium. Alternative splicing results in multiple transcript variants.

订购热线: 4008-898-798

**Applications**

**Western blotting**

Predicted band size:58 kDa

Positive control:293T cells

Recommended dilution: 500-2000

Gel: 8%SDS-PAGE

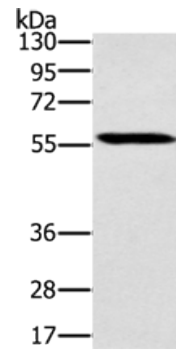
Lysate: 40 µg

Lane: 293T cells

Primary antibody: ml123168(SLC29A4 Antibody) at dilution 1/250

Secondary antibody: Goat anti rabbit IgG at 1/8000 dilution

Exposure time: 5 seconds



**ELISA**

Recommended dilution:2000-5000

联系电话: 4008-898-798, 021-61725725

联系QQ: 2881505695, 2881505696

邮箱: mlbio\_cn@yeah.net

网址: www.mlbio.cn