

Anti-KCNMB1 antibody

Cat. No.	ml161821
Package	25 µl/100 µl/200 µl
Storage	-20°C, pH7.4 PBS, 0.05% NaN ₃ , 40% Glycerol

Product overview

Description	Anti-KCNMB1 rabbit polyclonal antibody
Applications	ELISA, WB
Immunogen	Synthetic peptide of human KCNMB1
Reactivity	Human, Mouse
Content	1 mg/ml
Host species	Rabbit
Ig class	Immunogen-specific rabbit IgG
Purification	Antigen affinity purification

Target information

Symbol	KCNMB1
Full name	potassium channel subfamily M regulatory beta subunit 1
Synonyms	hbeta1; BKbeta1; SLO-BETA; hslo-beta; K(VCA)beta; slo-beta-1; k(VCA)beta-1
Swissprot	Q16558

Target Background

MaxiK channels are large conductance, voltage and calcium-sensitive potassium channels which are fundamental to the control of smooth muscle tone and neuronal excitability. MaxiK channels can be formed by 2 subunits: the pore-forming alpha subunit and the product of this gene, the modulatory beta subunit. Intracellular calcium regulates the physical association between the alpha and beta subunits.

订购热线: 4008-898-798

Applications

Western blotting

Predicted band size:22 kDa

Positive control:Mouse heart and lung tissue

Recommended dilution: 200-1000

Gel: 12%SDS-PAGE

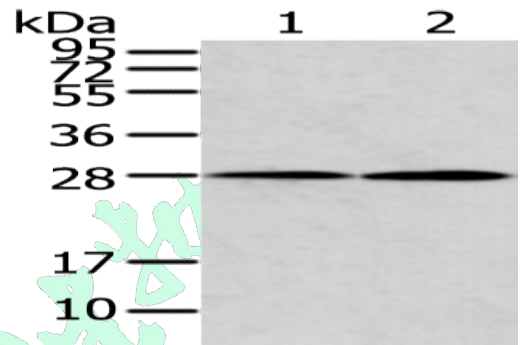
Lysate: 40 µg

Lane 1-2: Mouse heart and lung tissue

Primary antibody: ml161821(KCNMB1 Antibody) at dilution 1/500

Secondary antibody: Goat anti rabbit IgG at 1/8000 dilution

Exposure time: 15 seconds



ELISA

Recommended dilution:1000-2000

联系电话: 4008-898-798, 021-61725725

联系QQ: 2881505695, 2881505696

邮箱: mlbio_cn@yeah.net

网址: www.mlbio.cn