

Anti-MAT2B antibody

Cat. No.	ml123685
Package	25 µl/100 µl/200 µl
Storage	-20°C, pH7.4 PBS, 0.05% NaN ₃ , 40% Glycerol

Product overview

Description	Anti-MAT2B rabbit polyclonal antibody
Applications	ELISA, WB
Immunogen	Fusion protein of human MAT2B
Reactivity	Human, Mouse, Rat
Content	0.9 mg/ml
Host species	Rabbit
Ig class	Immunogen-specific rabbit IgG
Purification	Antigen affinity purification

Target information

Symbol	MAT2B
Full name	methionine adenosyltransferase II, beta
Synonyms	TGR; MAT-II; SDR23E1; MATIIbeta; Nbla02999
Swissprot	Q9NZL9

Target Background

The protein encoded by this gene belongs to the methionine adenosyltransferase (MAT) family. MAT catalyzes the biosynthesis of S-adenosylmethionine from methionine and ATP. This protein is the regulatory beta subunit of MAT. Alternative splicing results in multiple transcript variants encoding different isoforms.

订购热线: 4008-898-798

Applications

Western blotting

Predicted band size:38 kDa

Positive control:Human fetal liver tissue

Recommended dilution: 1000-5000

Gel: 8%SDS-PAGE

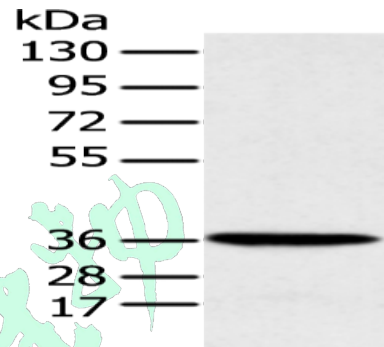
Lysate: 40 μ g

Lane: Human fetal liver tissue

Primary antibody: ml123685(MAT2B Antibody) at dilution 1/1000

Secondary antibody: Goat anti rabbit IgG at 1/8000 dilution

Exposure time: 30 seconds



ELISA

Recommended dilution:2000-10000

联系电话: 4008-898-798, 021-61725725

联系QQ: 2881505695, 2881505696

邮箱: mlbio_cn@yeah.net

网址: www.mlbio.cn