

Anti-ANP32E antibody

Cat. No.	ml161845
Package	25 µl/100 µl/200 µl
Storage	-20°C, pH7.4 PBS, 0.05% NaN ₃ , 40% Glycerol

Product overview

Description	Anti-ANP32E rabbit polyclonal antibody
Applications	ELISA, WB, IHC
Immunogen	Synthetic peptide of human ANP32E
Reactivity	Human, Mouse, Rat
Content	0.5 mg/ml
Host species	Rabbit
Ig class	Immunogen-specific rabbit IgG
Purification	Antigen affinity purification

Target information

Symbol	ANP32E
Full name	acidic (leucine-rich) nuclear phosphoprotein 32 family, member E
Synonyms	LANPL; LANP-L
Swissprot	Q9BTT0

Target Background

The Anp32 family consists of 32 evolutionarily-conserved proteins and is included within the superfamily of leucine-rich repeat (LRR) proteins. Leucine-rich acidic nuclear protein-like (LANPL), also called ANP32E or Cpd1, is a member of the Anp32 family. LANPL is located in the cytoplasm of peripheral blood leukocytes, colon, small intestine, prostate, thymus, spleen, skeletal muscle, liver and kidney. It has also been detected in the nucleus, cytoplasm and membrane of multiple brain regions. Upon phosphorylation, LANPL colocalizes and inhibits protein phosphatase 2A (PP2A), but does not inhibit PP1. LANPL modulates cell signalling and transduction of gene expression to regulate the morphology and dynamics of the cytoskeleton, cell adhesion, neural development and cerebellar morphogenesis.

订购热线: 4008-898-798

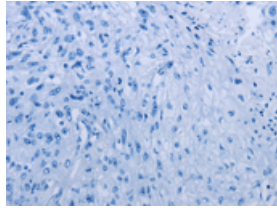
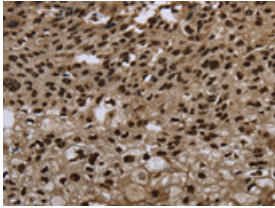
Applications

Immunohistochemistry

Predicted cell location: Cytoplasm and Nucleus

Positive control: Human esophagus cancer

Recommended dilution: 50-200

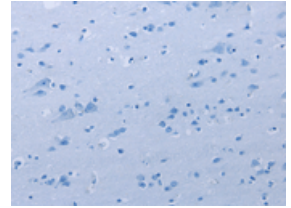
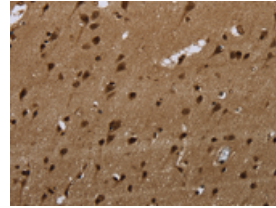


The image on the left is immunohistochemistry of paraffin-embedded Human esophagus cancer tissue using ml161845(ANP32E Antibody) at dilution 1/20, on the right is treated with synthetic peptide. (Original magnification: ×200)

Predicted cell location: Cytoplasm and Nucleus

Positive control: Human brain

Recommended dilution: 50-200



The image on the left is immunohistochemistry of paraffin-embedded Human brain tissue using ml161845(ANP32E Antibody) at dilution 1/20, on the right is treated with synthetic peptide. (Original magnification: ×200)

Western blotting

Predicted band size: 31 kDa

Positive control: Mouse thymus tissue

Recommended dilution: 500-2000

Gel: 10%SDS-PAGE

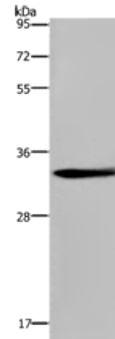
Lysate: 40 µg

Lane: Mouse thymus tissue

Primary antibody: ml161845(ANP32E Antibody) at dilution 1/300

Secondary antibody: Goat anti rabbit IgG at 1/8000 dilution

Exposure time: 20 seconds



ELISA

Recommended dilution: 2000-5000

联系电话: 4008-898-798, 021-61725725

联系QQ: 2881505695, 2881505696

邮箱: mlbio_cn@yeah.net

网址: www.mlbio.cn