

## Anti-IDO2 antibody

<b>Cat. No.</b>	ml123764
<b>Package</b>	25 µl/100 µl/200 µl
<b>Storage</b>	-20°C, pH7.4 PBS, 0.05% NaN <sub>3</sub> , 40% Glycerol

### Product overview

<b>Description</b>	Anti-IDO2 rabbit polyclonal antibody
<b>Applications</b>	ELISA, WB
<b>Immunogen</b>	Full length fusion protein
<b>Reactivity</b>	Human
<b>Content</b>	0.8 mg/ml
<b>Host species</b>	Rabbit
<b>Ig class</b>	Immunogen-specific rabbit IgG
<b>Purification</b>	Antigen affinity purification

### Target information

<b>Symbol</b>	IDO2
<b>Full name</b>	indoleamine 2,3-dioxygenase 2
<b>Synonyms</b>	INDOL1
<b>Swissprot</b>	Q6ZQW0

### Target Background

INDOL1 is also known as IDO2 (indoleamine 2,3-dioxygenase 2) and is a 407 amino acid protein that is expressed in various tissues, including liver, small intestine, spleen, placenta, thymus, lung, brain, kidney, colon and dendritic cells. INDOL1 is selectively inhibited by D-1MT (1-methyl-d-tryptophan), which also inhibits IDO (indoleamine 2,3-dioxygenase) and is significant because IDO expression causes suppression of T cell responses to tumors in dendritic cells. The inhibition of INDOL1 by D-1MT suggests a common function in immunomodulation. In the human INDOL1 gene, two single nucleotide polymorphisms have been detected which abolish the enzymatic function of INDOL1.

订购热线: 4008-898-798

**Applications**

**Western blotting**

Predicted band size:45 kDa

Positive control:Human kidney tissue, SKOV3 cell

Recommended dilution: 200-1000

Gel: 8%SDS-PAGE

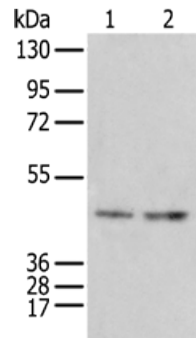
Lysate: 40 µg

Lane 1-2: Human kidney tissue, SKOV3 cell

Primary antibody: ml123764(IDO2 Antibody) at dilution 1/250

Secondary antibody: Goat anti rabbit IgG at 1/8000 dilution

Exposure time: 30 seconds



**ELISA**

Recommended dilution:5000-10000

联系电话: 4008-898-798, 021-61725725

联系QQ: 2881505695, 2881505696

邮箱: mlbio\_cn@yeah.net

网址: www.mlbio.cn