

Anti-MARCH2 antibody

Cat. No.	ml123811
Package	25 µl/100 µl/200 µl
Storage	-20°C, pH7.4 PBS, 0.05% NaN ₃ , 40% Glycerol

Product overview

Description	Anti-MARCH2 rabbit polyclonal antibody
Applications	ELISA, WB
Immunogen	Full length fusion protein
Reactivity	Human, Mouse, Rat
Content	0.4 mg/ml
Host species	Rabbit
Ig class	Immunogen-specific rabbit IgG
Purification	Antigen affinity purification

Target information

Symbol	MARCH2
Full name	membrane associated ring-CH-type finger 2
Synonyms	RNF172; HSPC240; MARCH-II
Swissprot	Q9P0N8

Target Background

Ubiquitination is an important mechanism through which three classes of enzymes act in concert to target short-lived or abnormal proteins for destruction. The three classes of enzymes involved in ubiquitination are the ubiquitin-activating enzymes (E1s), the ubiquitin-conjugating enzymes (E2s) and the ubiquitin-protein ligases (E3s). MARCH2 (membrane-associated ring finger (C3HC4) 2), also known as RNF172 or HSPC240, is a 246 amino acid multi-pass membrane protein that localizes to the endoplasmic reticulum and contains one RING-CH-type zinc finger. Expressed in a variety of tissues, MARCH2 functions as an E3 ubiquitin-protein ligase that is thought to mediate the ubiquitination and subsequent degradation of CD71 and B7-2 and may be involved in endosomal protein trafficking.

订购热线: 4008-898-798

Applications

Western blotting

Predicted band size: 27 kDa

Positive control: Human fetal liver tissue

Recommended dilution: 200-1000

Gel: 8% SDS-PAGE

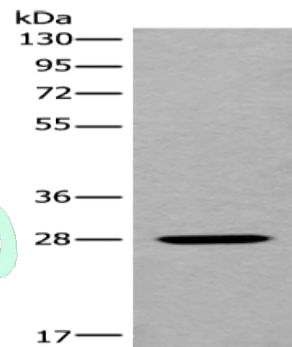
Lysate: 40 μ g

Lane: Human fetal liver tissue

Primary antibody: ml123811 (MARCH2 Antibody) at dilution 1/250

Secondary antibody: Goat anti rabbit IgG at 1/8000 dilution

Exposure time: 30 seconds



ELISA

Recommended dilution: 1000-2000

联系电话: 4008-898-798, 021-61725725

联系QQ: 2881505695, 2881505696

邮箱: mlbio_cn@yeah.net

网址: www.mlbio.cn