

Anti-USE1 antibody

Cat. No.	ml123831
Package	25 µl/100 µl/200 µl
Storage	-20°C, pH7.4 PBS, 0.05% NaN ₃ , 40% Glycerol

Product overview

Description	Anti-USE1 rabbit polyclonal antibody
Applications	ELISA, WB
Immunogen	Full length fusion protein
Reactivity	Human, Mouse
Content	1 mg/ml
Host species	Rabbit
Ig class	Immunogen-specific rabbit IgG
Purification	Antigen affinity purification

Target information

Symbol	USE1
Full name	unconventional SNARE in the ER 1 homolog (S. cerevisiae)
Synonyms	D12; P31; SLT1; MDS032
Swissprot	Q9NZ43

Target Background

Unconventional SNARE in the ER 1, also known as USE1 or protein p31, is a 259 amino acid t-SNARE that forms a larger complex with ZW10, RINT-1 and Syntaxin 18. Upon Mg²⁺-AP treatment in the presence of NSF and α -SNAP, ZW10, RINT-1 and USE1 dissociate from Syntaxin 18. USE1 is a single-pass type IV membrane protein that is localized to the endoplasmic reticulum membrane. Three named isoforms exist for USE1 as a result of alternative splicing events.

订购热线: 4008-898-798

Applications

Western blotting

Predicted band size: 29 kDa

Positive control: Human fetal liver tissue

Recommended dilution: 200-1000

Gel: 12% SDS-PAGE

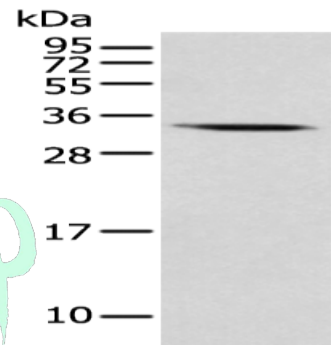
Lysate: 40 µg

Lane: Human fetal liver tissue

Primary antibody: ml123831 (USE1 Antibody) at dilution 1/350

Secondary antibody: Goat anti rabbit IgG at 1/8000 dilution

Exposure time: 10 seconds



ELISA

Recommended dilution: 5000-10000

联系电话: 4008-898-798, 021-61725725

联系QQ: 2881505695, 2881505696

邮箱: mlbio_cn@yeah.net

网址: www.mlbio.cn