

Anti-LTB4R2 antibody

Cat. No.	ml161870
Package	25 µl/100 µl/200 µl
Storage	-20°C, pH7.4 PBS, 0.05% NaN ₃ , 40% Glycerol

Product overview

Description	Anti-LTB4R2 rabbit polyclonal antibody
Applications	ELISA, WB
Immunogen	Synthetic peptide of human LTB4R2
Reactivity	Human, Mouse
Content	0.5 mg/ml
Host species	Rabbit
Ig class	Immunogen-specific rabbit IgG
Purification	Antigen affinity purification

Target information

Symbol	LTB4R2
Full name	leukotriene B4 receptor 2
Synonyms	BLT2; NOP9; BLTR2; JULF2; KPG_004; LTB4-R2; LTB4-R 2
Swissprot	Q9NPC1

Target Background

Leukotriene B4 receptor 1 (LTB4R1), also designated P2Y purinoceptor 7, is a receptor for extracellular ATP, UTP and ADP. Through modulation of L-type calcium currents, LTB4-R1 is involved in the regulation of cardiac muscle contraction. It is also a receptor for leukotriene B4 (LTB4), a potent chemoattractant involved in inflammation and immune response. Leukotriene B4 receptor 2 (LTB4R2) is a ubiquitously expressed 358-amino acid receptor for LTB4.

订购热线: 4008-898-798

Applications

Western blotting

Predicted band size: 42 kDa

Positive control: Mouse brain and liver tissue

Recommended dilution: 500-2000

Gel: 8%SDS-PAGE

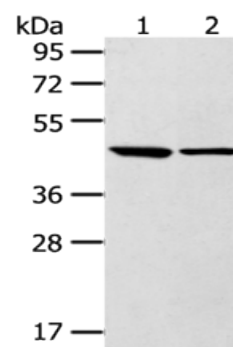
Lysate: 40 µg

Lane 1-2: Mouse brain tissue, Mouse liver tissue

Primary antibody: ml161870(LTB4R2 Antibody) at dilution 1/250

Secondary antibody: Goat anti rabbit IgG at 1/8000 dilution

Exposure time: 10 seconds



ELISA

Recommended dilution: 2000-5000

联系电话: 4008-898-798, 021-61725725

联系QQ: 2881505695, 2881505696

邮箱: mlbio_cn@yeah.net

网址: www.mlbio.cn