

Anti-SFXN1 antibody

Cat. No.	ml123927
Package	25 µl/100 µl/200 µl
Storage	-20°C, pH7.4 PBS, 0.05% NaN ₃ , 40% Glycerol

Product overview

Description	Anti-SFXN1 rabbit polyclonal antibody
Applications	ELISA, WB
Immunogen	Fusion protein of human SFXN1
Reactivity	Human, Mouse, Rat
Content	0.3 mg/ml
Host species	Rabbit
Ig class	Immunogen-specific rabbit IgG
Purification	Antigen affinity purification

Target information

Symbol	SFXN1
Full name	sideroflexin 1
Synonyms	
Swissprot	Q9H9B4

Target Background

The sideroflexin (SFXN) family is comprised of SFXN1, SFXN2, SFXN3, SFXN4 and SFXN5. SFXN1, also designated tricarboxylate carrier protein TCC, is the most highly characterized family member. The ubiquitously expressed SFXN1 protein resides as an integral protein of the mitochondrial inner membrane. It functions as an essential component of the shuttle system that transports mitochondrial acetyl-CoA into the cytosol, where lipogenesis occurs. The SFXN1 gene is mutated in flexed-tail (*f/f*) mice, which display axial skeletal abnormalities and a transient embryonic and neonatal anemia characterized by pathologic intramitochondrial iron deposits in erythrocytes. Therefore, SFXN1 is also thought to facilitate the transport of a component required for iron utilization into mitochondria. All SFXN family members show expression in pancreatic islet cells. SFXN5 displays a citrate transport activity and is primarily expressed in brain.

订购热线: 4008-898-798

Applications

Western blotting

Predicted band size:36 kDa

Positive control:Human fetal liver tissue and Human cerebrum tissue

Recommended dilution: 200-1000

Gel: 8%SDS-PAGE

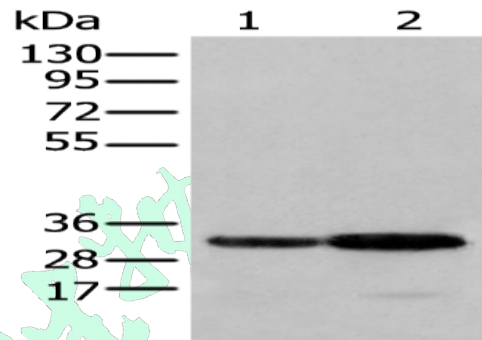
Lysate: 40 µg

Lane 1-2: Human fetal liver tissue and Human cerebrum tissue

Primary antibody: ml123927(SFXN1 Antibody) at dilution 1/200

Secondary antibody: Goat anti rabbit IgG at 1/8000 dilution

Exposure time: 1 second



ELISA

Recommended dilution:5000-10000

联系电话: 4008-898-798, 021-61725725

联系QQ: 2881505695, 2881505696

邮箱: mlbio_cn@yeah.net

网址: www.mlbio.cn