

Anti-XPNPEP2 antibody

| | |
|-----------------|---|
| Cat. No. | ml124076 |
| Package | 25 µl/100 µl/200 µl |
| Storage | -20°C, pH7.4 PBS, 0.05% NaN ₃ , 40% Glycerol |

Product overview

| | |
|---------------------|---|
| Description | Anti-XPNPEP2 rabbit polyclonal antibody |
| Applications | ELISA, WB |
| Immunogen | Fusion protein of human XPNPEP2 |
| Reactivity | Human |
| Content | 1.3 mg/ml |
| Host species | Rabbit |
| Ig class | Immunogen-specific rabbit IgG |
| Purification | Antigen affinity purification |

Target information

| | |
|------------------|--|
| Symbol | XPNPEP2 |
| Full name | X-prolyl aminopeptidase (aminopeptidase P) 2, membrane-bound |
| Synonyms | APP2; AEACE1 |
| Swissprot | O43895 |

Target Background

Aminopeptidase P is a hydrolase specific for N-terminal imido bonds, which are common to several collagen degradation products, neuropeptides, vasoactive peptides, and cytokines. Structurally, the enzyme is a member of the 'pita bread fold' family and occurs in mammalian tissues in both soluble and GPI-anchored membrane-bound forms. A membrane-bound and soluble form of this enzyme have been identified as products of two separate genes.

订购热线: 4008-898-798

Applications

Western blotting

Predicted band size:76 kDa

Positive control:Human kidney tissue lysate

Recommended dilution: 200-1000

Gel: 8%SDS-PAGE

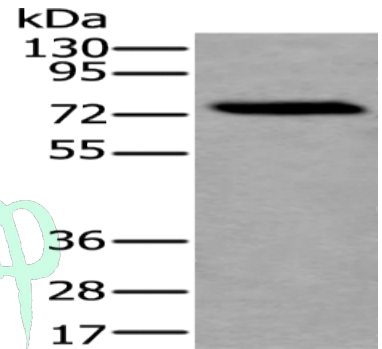
Lysate: 40 µg

Lane: Human kidney tissue lysate

Primary antibody: ml124076(XPNPEP2 Antibody) at dilution 1/250

Secondary antibody: Goat anti rabbit IgG at 1/8000 dilution

Exposure time: 20 seconds



ELISA

Recommended dilution:5000-10000

联系电话: 4008-898-798, 021-61725725

联系QQ: 2881505695, 2881505696

邮箱: mlbio_cn@yeah.net

网址: www.mlbio.cn