

Anti-ATL3 antibody

Cat. No.	ml124208
Package	25 µl/100 µl/200 µl
Storage	-20°C, pH7.4 PBS, 0.05% NaN ₃ , 40% Glycerol

Product overview

Description	Anti-ATL3 rabbit polyclonal antibody
Applications	ELISA, WB
Immunogen	Fusion protein of human ATL3
Reactivity	Human, Mouse, Rat
Content	0.6 mg/ml
Host species	Rabbit
Ig class	Immunogen-specific rabbit IgG
Purification	Antigen affinity purification

Target information

Symbol	ATL3
Full name	atlastin GTPase 3
Synonyms	HSN1F
Swissprot	Q6DD88

Target Background

This gene encodes a member of a family of dynamin-like, integral membrane GTPases. The encoded protein is required for the proper formation of the network of interconnected tubules of the endoplasmic reticulum. Mutations in this gene may be associated with hereditary sensory neuropathy type IF. Alternatively spliced transcript variants that encode distinct isoforms have been described.

订购热线: 4008-898-798

Applications

Western blotting

Predicted band size: 61 kDa

Positive control: NIH/3T3 and HEPG2 cell lysates

Recommended dilution: 500-2000

Gel: 8%SDS-PAGE

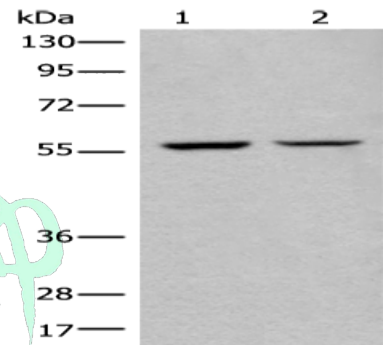
Lysate: 40 μ g

Lane 1-2: NIH/3T3 and HEPG2 cell lysates

Primary antibody: ml124208(ATL3 Antibody) at dilution 1/400

Secondary antibody: Goat anti rabbit IgG at 1/8000 dilution

Exposure time: 1 second



ELISA

Recommended dilution: 5000-10000

联系电话: 4008-898-798, 021-61725725

联系QQ: 2881505695, 2881505696

邮箱: mlbio_cn@yeah.net

网址: www.mlbio.cn