

## Anti-BAP1 antibody

<b>Cat. No.</b>	ml121881
<b>Package</b>	25 µl/100 µl/200 µl
<b>Storage</b>	-20°C, pH7.4 PBS, 0.05% NaN <sub>3</sub> , 40% Glycerol

### Product overview

<b>Description</b>	Anti-BAP1 rabbit polyclonal antibody
<b>Applications</b>	ELISA, IHC
<b>Immunogen</b>	Fusion protein of human BAP1
<b>Reactivity</b>	Human, Mouse, Rat
<b>Content</b>	0.8 mg/ml
<b>Host species</b>	Rabbit
<b>Ig class</b>	Immunogen-specific rabbit IgG
<b>Purification</b>	Antigen affinity purification

### Target information

<b>Symbol</b>	BAP1
<b>Full name</b>	BRCA1 associated protein 1
<b>Synonyms</b>	UHL2; hucep-6; HUCEP-13
<b>Swissprot</b>	Q92560

### Target Background

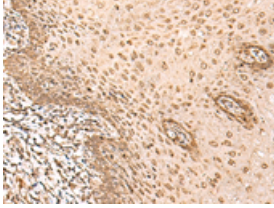
This gene belongs to the ubiquitin C-terminal hydrolase subfamily of deubiquitinating enzymes that are involved in the removal of ubiquitin from proteins. The encoded enzyme binds to the breast cancer type 1 susceptibility protein (BRCA1) via the RING finger domain of the latter and acts as a tumor suppressor. In addition, the enzyme may be involved in regulation of transcription, regulation of cell cycle and growth, response to DNA damage and chromatin dynamics. Germline mutations in this gene may be associated with tumor predisposition syndrome (TPDS), which involves increased risk of cancers including malignant mesothelioma, uveal melanoma and cutaneous melanoma.

订购热线: 4008-898-798

#### Applications

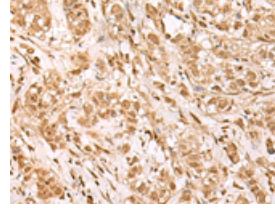
##### Immunohistochemistry

Predicted cell location: Nucleus and Cytoplasm  
Positive control: Human esophagus cancer  
Recommended dilution: 40-200



The image is immunohistochemistry of paraffin-embedded Human esophagus cancer tissue using ml121881(BAP1 Antibody) at dilution 1/35. (Original magnification: ×200)

Predicted cell location: Nucleus and Cytoplasm  
Positive control: Human breast cancer  
Recommended dilution: 40-200



The image is immunohistochemistry of paraffin-embedded Human breast cancer tissue using ml121881(BAP1 Antibody) at dilution 1/35. (Original magnification: ×200)

##### ELISA

Recommended dilution: 5000-10000

联系电话: 4008-898-798, 021-61725725

联系QQ: 2881505695, 2881505696

邮箱: [mlbio\\_cn@yeah.net](mailto:mlbio_cn@yeah.net)

网址: [www.mlbio.cn](http://www.mlbio.cn)