

## Anti-CHRD antibody

<b>Cat. No.</b>	ml124554
<b>Package</b>	25 µl/100 µl/200 µl
<b>Storage</b>	-20°C, pH7.4 PBS, 0.05% NaN <sub>3</sub> , 40% Glycerol

### Product overview

<b>Description</b>	Anti-CHRD rabbit polyclonal antibody
<b>Applications</b>	ELISA, WB, IHC
<b>Immunogen</b>	Fusion protein of human CHRD
<b>Reactivity</b>	Human, Mouse, Rat
<b>Content</b>	0.5 mg/ml
<b>Host species</b>	Rabbit
<b>Ig class</b>	Immunogen-specific rabbit IgG
<b>Purification</b>	Antigen affinity purification

### Target information

<b>Symbol</b>	CHRD
<b>Full name</b>	chordin
<b>Synonyms</b>	
<b>Swissprot</b>	Q9H2X0

### Target Background

This gene encodes a secreted protein that dorsalizes early vertebrate embryonic tissues by binding to ventralizing TGF-beta-like bone morphogenetic proteins and sequestering them in latent complexes. The encoded protein may also have roles in organogenesis and during adulthood. It has been suggested that this gene could be a candidate gene for Cornelia de Lange syndrome. Reduced expression of this gene results in enhanced bone regeneration. Alternative splicing results in multiple transcript variants. Other alternative splice variants have been described but their full length sequence has not been determined.

订购热线: 4008-898-798

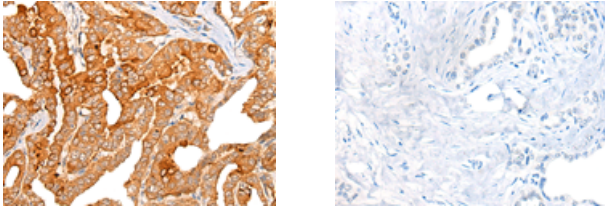
### Applications

#### Immunohistochemistry

Predicted cell location: Cytoplasm and Cell membrane

Positive control: Human thyroid cancer

Recommended dilution: 25-100



The image on the left is immunohistochemistry of paraffin-embedded Human thyroid cancer tissue using ml124554(CHRD Antibody) at dilution 1/25, on the right is treated with fusion protein. (Original magnification: ×200)

#### Western blotting

Predicted band size:102 kDa

Positive control:Human cerebrum tissue and Mouse brain tissue lysates

Recommended dilution: 200-1000

Gel: 6%SDS-PAGE

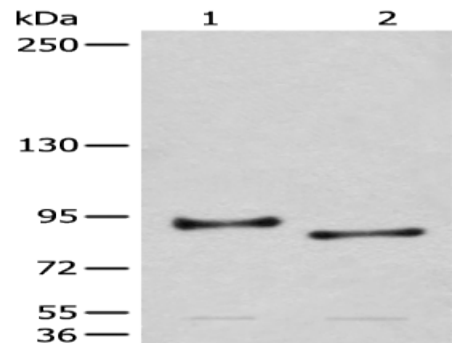
Lysate: 40 μg

Lane 1-2: Human cerebrum tissue and Mouse brain tissue lysates

Primary antibody: ml124554(CHRD Antibody) at dilution 1/250

Secondary antibody: Goat anti rabbit IgG at 1/8000 dilution

Exposure time: 1 minute



#### ELISA

Recommended dilution: 5000-10000

联系电话: 4008-898-798, 021-61725725

联系QQ: 2881505695, 2881505696

邮箱: [mlbio\\_cn@yeah.net](mailto:mlbio_cn@yeah.net)

网址: [www.mlbio.cn](http://www.mlbio.cn)