

Anti-COMMD1 antibody

Cat. No.	ml124622
Package	25 µl/100 µl/200 µl
Storage	-20°C, pH7.4 PBS, 0.05% NaN ₃ , 40% Glycerol

Product overview

Description	Anti-COMMD1 rabbit polyclonal antibody
Applications	ELISA, WB, IHC
Immunogen	Fusion protein of human COMMD1
Reactivity	Human, Mouse
Content	0.6 mg/ml
Host species	Rabbit
Ig class	Immunogen-specific rabbit IgG
Purification	Antigen affinity purification

Target information

Symbol	COMMD1
Full name	copper metabolism domain containing 1
Synonyms	MURR1; C2orf5
Swissprot	Q8N668

Target Background

COMMD1 is a regulator of copper homeostasis, sodium uptake, and NF-kappa-B (see MIM 164011) signaling (de Bie et al., 2005 [PubMed 16267171]).

订购热线: 4008-898-798

Applications

Immunohistochemistry

Predicted cell location: Cytoplasm and Nucleus

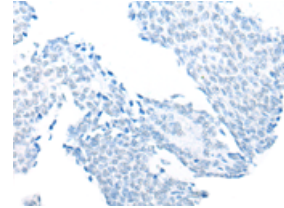
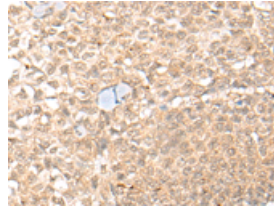
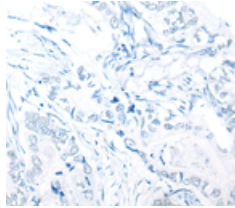
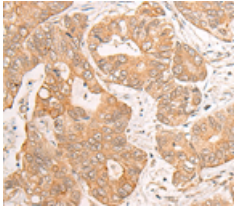
Positive control: Human gastric cancer

Recommended dilution: 25-100

Predicted cell location: Cytoplasm and Nucleus

Positive control: Human ovarian cancer

Recommended dilution: 25-100



The image on the left is immunohistochemistry of paraffin-embedded Human gastric cancer tissue using ml124622(COMMD1 Antibody) at dilution 1/25, on the right is treated with fusion protein. (Original magnification: ×200)

The image on the left is immunohistochemistry of paraffin-embedded Human ovarian cancer tissue using ml124622(COMMD1 Antibody) at dilution 1/25, on the right is treated with fusion protein. (Original magnification: ×200)

Western blotting

Predicted band size: 21 kDa

Positive control: 231, Jurkat, A549, HeLa and HepG2 cell lysates

Recommended dilution: 200-1000

Gel: 12%SDS-PAGE

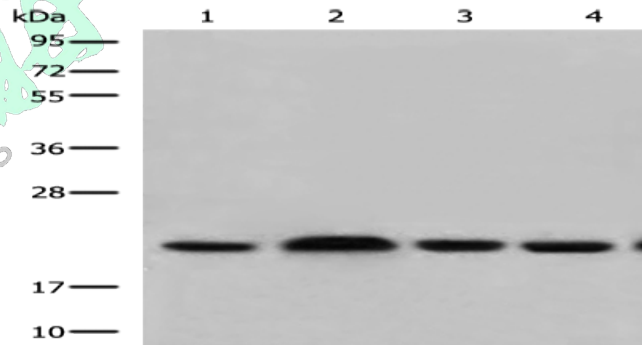
Lysate: 40 μg

Lane 1-5: 231, Jurkat, A549, HeLa and HepG2 cell lysates

Primary antibody: ml124622(COMMD1 Antibody) at dilution 1/350

Secondary antibody: Goat anti rabbit IgG at 1/8000 dilution

Exposure time: 3 seconds



ELISA

Recommended dilution: 5000-10000

联系电话: 4008-898-798, 021-61725725

联系QQ: 2881505695, 2881505696

邮箱: mlbio_cn@yeah.net

网址: www.mlbio.cn