

## Anti-COPZ1 antibody

<b>Cat. No.</b>	ml124631
<b>Package</b>	25 µl/100 µl/200 µl
<b>Storage</b>	-20°C, pH7.4 PBS, 0.05% NaN <sub>3</sub> , 40% Glycerol

### Product overview

<b>Description</b>	Anti-COPZ1 rabbit polyclonal antibody
<b>Applications</b>	ELISA, WB
<b>Immunogen</b>	Full length fusion protein
<b>Reactivity</b>	Human, Mouse
<b>Content</b>	0.6 mg/ml
<b>Host species</b>	Rabbit
<b>Ig class</b>	Immunogen-specific rabbit IgG
<b>Purification</b>	Antigen affinity purification

### Target information

<b>Symbol</b>	COPZ1
<b>Full name</b>	coatamer protein complex subunit zeta 1
<b>Synonyms</b>	COPZ; CGI-120; HSPC181; zeta-COP; zeta1-COP
<b>Swissprot</b>	P61923

### Target Background

This gene encodes a subunit of the cytoplasmic coatamer protein complex, which is involved in autophagy and intracellular protein trafficking. The coatamer protein complex is comprised of seven subunits and functions as the coat protein of coat protein complex (COP)I-vesicles. Alternative splicing results in multiple transcript variants.

订购热线: 4008-898-798

### Applications

#### Western blotting

Predicted band size: 20 kDa

Positive control: HeLa, HepG2, Jurkat and K562 cell lysates

Recommended dilution: 200-1000

Gel: 12% SDS-PAGE

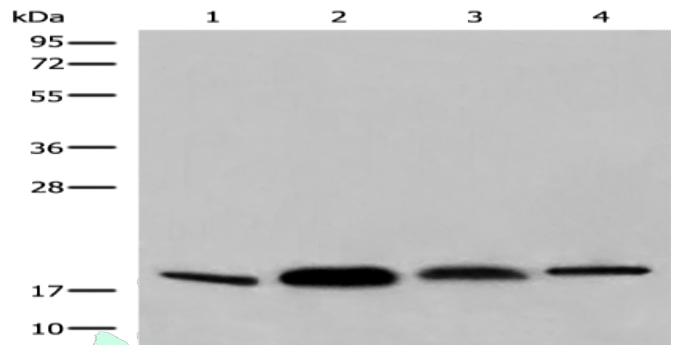
Lysate: 40 µg

Lane 1-4: HeLa, HepG2, Jurkat and K562 cell lysates

Primary antibody: ml124631 (COPZ1 Antibody) at dilution 1/250

Secondary antibody: Goat anti rabbit IgG at 1/8000 dilution

Exposure time: 10 seconds



### ELISA

Recommended dilution: 5000-10000

联系电话: 4008-898-798, 021-61725725

联系QQ: 2881505695, 2881505696

邮箱: [mlbio\\_cn@yeah.net](mailto:mlbio_cn@yeah.net)

网址: [www.mlbio.cn](http://www.mlbio.cn)