

Anti-MYCN antibody

Cat. No.	ml161964
Package	25 µl/100 µl/200 µl
Storage	-20°C, pH7.4 PBS, 0.05% NaN ₃ , 40% Glycerol

Product overview

Description	Anti-MYCN rabbit polyclonal antibody
Applications	ELISA, WB, IHC
Immunogen	Synthetic peptide of human MYCN
Reactivity	Human, Mouse, Rat
Content	1.38 mg/ml
Host species	Rabbit
Ig class	Immunogen-specific rabbit IgG
Purification	Antigen affinity purification

Target information

Symbol	MYCN
Full name	v-myc avian myelocytomatosis viral oncogene neuroblastoma derived homolog
Synonyms	NMYC; ODED; MODED; N-myc; bHLHe37
Swissprot	P04198

Target Background

This gene is a member of the MYC family and encodes a protein with a basic helix-loop-helix (bHLH) domain. This protein is located in the nucleus and must dimerize with another bHLH protein in order to bind DNA. Amplification of this gene is associated with a variety of tumors, most notably neuroblastomas. Multiple alternatively spliced transcript variants encoding different isoforms have been found for this gene.

订购热线: 4008-898-798

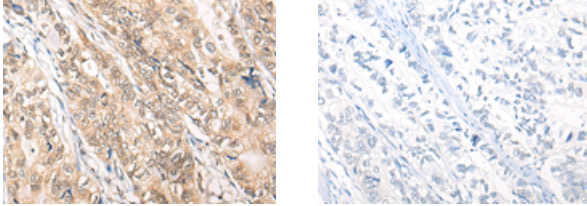
Applications

Immunohistochemistry

Predicted cell location: Nucleus

Positive control: Human gastric cancer

Recommended dilution: 25-100



The image on the left is immunohistochemistry of paraffin-embedded Human gastric cancer tissue using ml161964(MYCN Antibody) at dilution 1/35, on the right is treated with synthetic peptide. (Original magnification: ×200)

Western blotting

Predicted band size: 50 kDa

Positive control: 293T, A172, Hela and SKOV3 cell lysates

Recommended dilution: 1000-5000

Gel: 8%SDS-PAGE

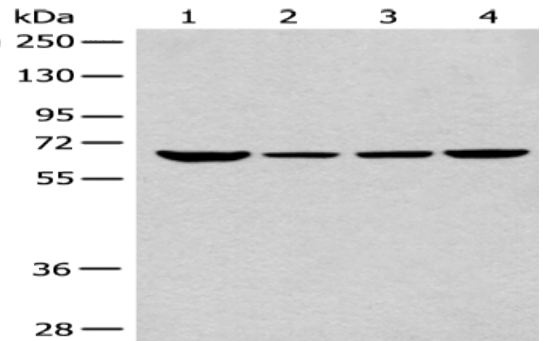
Lysate: 40 μg

Lane 1-4: 293T, A172, Hela and SKOV3 cell lysates

Primary antibody: ml161964(MYCN Antibody) at dilution 1/1600

Secondary antibody: Goat anti rabbit IgG at 1/8000 dilution

Exposure time: 5 seconds



ELISA

Recommended dilution: 5000-10000

联系电话: 4008-898-798, 021-61725725

联系QQ: 2881505695, 2881505696

邮箱: mlbio_cn@yeah.net

网址: www.mlbio.cn