

## Anti-NPHS2 antibody

|                 |   |
|-----------------|---|
| <b>Cat. No.</b> | ml161973  |
| <b>Package</b>  | 25 µl/100 µl/200 µl                                     |
| <b>Storage</b>  | -20°C, pH7.4 PBS, 0.05% NaN <sub>3</sub> , 40% Glycerol |

### Product overview

|                     |                                       |
|---------------------|---------------------------------------|
| <b>Description</b>  | Anti-NPHS2 rabbit polyclonal antibody |
| <b>Applications</b> | ELISA, WB, IHC                        |
| <b>Immunogen</b>    | Synthetic peptide of human NPHS2      |
| <b>Reactivity</b>   | Human, Mouse, Rat                     |
| <b>Content</b>      | 0.9 mg/ml                             |
| <b>Host species</b> | Rabbit                                |
| <b>Ig class</b>     | Immunogen-specific rabbit IgG         |
| <b>Purification</b> | Antigen affinity purification         |

### Target information

|                  |  |
|------------------|--|
| <b>Symbol</b>    | NPHS2                                      |
| <b>Full name</b> | nephrosis 2, idiopathic, steroid-resistant |
| <b>Synonyms</b>  | PDCN; SRN1                                 |
| <b>Swissprot</b> | Q9NP85                                     |

### Target Background

This gene encodes the glomerular protein podocin which plays a role in the regulation of glomerular permeability, and acts as a linker between the plasma membrane and the cytoskeleton. Defects in this gene are the cause of autosomal recessive steroid-resistant nephrotic syndrome (SRN). SRN is characterized by onset between three months and five years, resistance to steroid therapy and rapid progression to end-stage renal disease. An alternative splice variant has been described but its full length sequence has not been determined.

订购热线: 4008-898-798

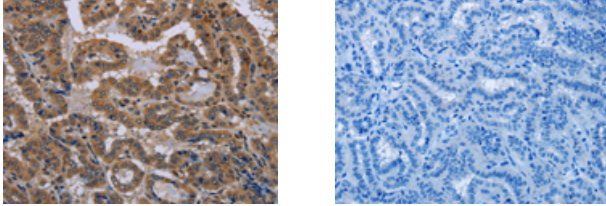
### Applications

#### Immunohistochemistry

Predicted cell location: Cytoplasm

Positive control: Human thyroid cancer

Recommended dilution: 50-200



The image on the left is immunohistochemistry of paraffin-embedded Human thyroid cancer tissue using ml161973(NPHS2 Antibody) at dilution 1/40, on the right is treated with synthetic peptide. (Original magnification:  $\times 200$ )

#### Western blotting

Predicted band size: 42 kDa

Positive control: Human hepatocellular carcinoma tissue

Recommended dilution: 200-1000

Gel: 10% SDS-PAGE

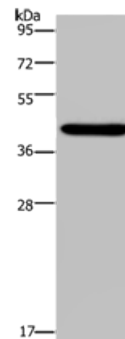
Lysate: 40  $\mu$ g

Lane: Human hepatocellular carcinoma tissue

Primary antibody: ml161973(NPHS2 Antibody) at dilution 1/200

Secondary antibody: Goat anti rabbit IgG at 1/8000 dilution

Exposure time: 2 minutes



#### ELISA

Recommended dilution: 2000-5000

联系电话: 4008-898-798, 021-61725725

联系QQ: 2881505695, 2881505696

邮箱: [mlbio\\_cn@yeah.net](mailto:mlbio_cn@yeah.net)

网址: [www.mlbio.cn](http://www.mlbio.cn)