

Anti-DUSP23 antibody

| | |
|-----------------|---------------------------------------------------------|
| Cat. No. | ml122260 |
| Package | 25 µl/100 µl/200 µl |
| Storage | -20°C, pH7.4 PBS, 0.05% NaN ₃ , 40% Glycerol |

Product overview

| | |
|---------------------|----------------------------------------|
| Description | Anti-DUSP23 rabbit polyclonal antibody |
| Applications | ELISA, IHC |
| Immunogen | Fusion protein of human DUSP23 |
| Reactivity | Human, Mouse |
| Content | 0.6 mg/ml |
| Host species | Rabbit |
| Ig class | Immunogen-specific rabbit IgG |
| Purification | Antigen affinity purification |

Target information

| | |
|------------------|-----------------------------------------|
| Symbol | DUSP23 |
| Full name | dual specificity phosphatase 23 |
| Synonyms | VHZ; MOSP; LDP-3; DUSP25; RP11-190A12.1 |
| Swissprot | Q9BVJ7 |

Target Background

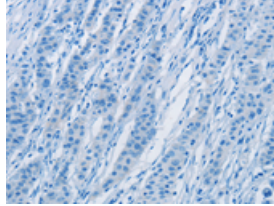
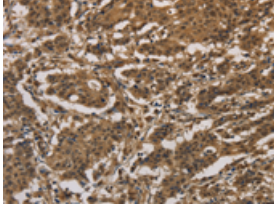
Dual specificity protein phosphatase 23, also known as low molecular mass dual specificity phosphatase 3 (LDP-3), is an enzyme that in humans is encoded by the DUSP23 gene.

订购热线: 4008-898-798

Applications

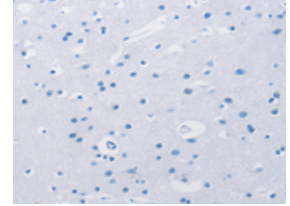
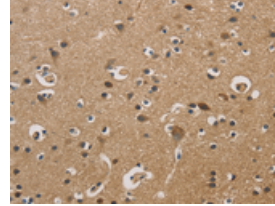
Immunohistochemistry

Predicted cell location: Cytoplasm or Nucleus
Positive control: Human gasrtic cancer
Recommended dilution: 50-200



The image on the left is immunohistochemistry of paraffin-embedded Human gastric cancer tissue using ml122260(DUSP23 Antibody) at dilution 1/20, on the right is treated with fusion protein. (Original magnification: ×200)

Predicted cell location: Cytoplasm or Nucleus
Positive control: Human brain
Recommended dilution: 50-200



The image on the left is immunohistochemistry of paraffin-embedded Human brain tissue using ml122260(DUSP23 Antibody) at dilution 1/20, on the right is treated with fusion protein. (Original magnification: ×200)

ELISA

Recommended dilution: 2000-5000

联系电话: 4008-898-798, 021-61725725

联系QQ: 2881505695, 2881505696

邮箱: mlbio_cn@yeah.net

网址: www.mlbio.cn