

Anti-ATAD5 antibody

| | |
|-----------------|---|
| Cat. No. | ml161469 |
| Package | 25 µl/100 µl/200 µl |
| Storage | -20°C, pH7.4 PBS, 0.05% NaN ₃ , 40% Glycerol |

Product overview

| | |
|---------------------|---------------------------------------|
| Description | Anti-ATAD5 rabbit polyclonal antibody |
| Applications | ELISA, WB |
| Immunogen | Synthetic peptide of human ATAD5 |
| Reactivity | Human |
| Content | 0.3 mg/ml |
| Host species | Rabbit |
| Ig class | Immunogen-specific rabbit IgG |
| Purification | Antigen affinity purification |

Target information

| | |
|------------------|--|
| Symbol | ATAD5 |
| Full name | ATPase family, AAA domain containing 5 |
| Synonyms | ELG1; FRAG1; C17orf41 |
| Swissprot | Q96QE3 |

Target Background

ATAD5 (ATPase family, AAA domain containing 5), also known as chromosome fragility-associated gene 1 protein, FRAG1 or ELG1, is a 1,844 amino acid nuclear protein that is involved in the DNA damage response and belongs to the AAA ATPase family. Existing as two alternatively spliced isoforms, ATAD5 interacts with Rad9 in growing cells where it assists in interactions between Rad9 and Bcl-2.

订购热线: 4008-898-798

Applications

Western blotting

Predicted band size: 207 kDa

Positive control: A431 cells

Recommended dilution: 200-1000

Gel: 8% SDS-PAGE

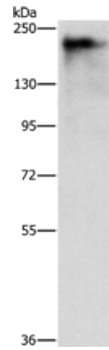
Lysate: 40 µg

Lane: A431 cells

Primary antibody: ml161469(ATAD5 Antibody) at dilution 1/400

Secondary antibody: Goat anti rabbit IgG at 1/8000 dilution

Exposure time: 15 seconds



ELISA

Recommended dilution: 1000-2000

联系电话: 4008-898-798, 021-61725725

联系QQ: 2881505695, 2881505696

邮箱: mlbio_cn@yeah.net

网址: www.mlbio.cn