

## Anti-ELOVL1 antibody

<b>Cat. No.</b>	ml122292
<b>Package</b>	25 µl/100 µl/200 µl
<b>Storage</b>	-20°C, pH7.4 PBS, 0.05% NaN <sub>3</sub> , 40% Glycerol

### Product overview

<b>Description</b>	Anti-ELOVL1 rabbit polyclonal antibody
<b>Applications</b>	ELISA, IHC
<b>Immunogen</b>	Fusion protein of human ELOVL1
<b>Reactivity</b>	Human, Mouse
<b>Content</b>	0.6 mg/ml
<b>Host species</b>	Rabbit
<b>Ig class</b>	Immunogen-specific rabbit IgG
<b>Purification</b>	Antigen affinity purification

### Target information

<b>Symbol</b>	ELOVL1
<b>Full name</b>	ELOVL fatty acid elongase 1
<b>Synonyms</b>	Ssc1; CGI-88
<b>Swissprot</b>	Q9BW60

### Target Background

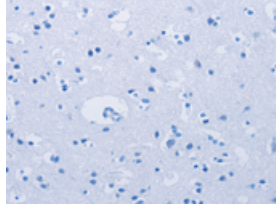
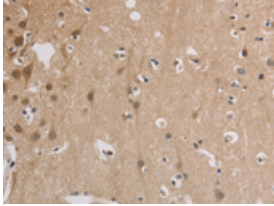
Elongation of very long chain fatty acid-like (ELOVL) proteins 1-6 are members of the ELO family of proteins, which play an important role in tissue-specific biosynthesis of very long chain fatty acids and sphingolipids. The ELOVL proteins act as catalysts in fatty acid elongation reduction and localize to the endoplasmic reticulum (ER). Elongation of very long chain fatty acids protein 1 (ELOVL1), also referred to as Ssc1, is the human homolog of the yeast ELO3 protein. It is expressed in a variety of tissues and at especially high levels in stomach, skin, intestine, kidney and lung. ELOVL1 participates in the elongation of very long chain saturated and monounsaturated fatty acids of up to 26 carbons and may be required for the development of a barrier in epithelial cells and skin. ELOVL1 is also important for the formation of Myelin in the central nervous system. Impaired ELOVL1 activity may be associated with disorders of sphingolipid metabolism.

订购热线: 4008-898-798

### Applications

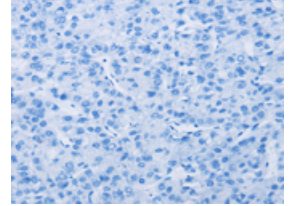
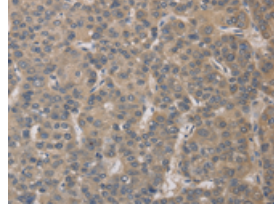
#### Immunohistochemistry

Predicted cell location: Cytoplasm and Nucleus  
Positive control: Human brain  
Recommended dilution: 50-200



The image on the left is immunohistochemistry of paraffin-embedded Human brain tissue using ml122292(ELOVL1 Antibody) at dilution 1/30, on the right is treated with fusion protein. (Original magnification: ×200)

Predicted cell location: Cytoplasm and Nucleus  
Positive control: Human liver cancer  
Recommended dilution: 50-200



The image on the left is immunohistochemistry of paraffin-embedded Human liver cancer tissue using ml122292(ELOVL1 Antibody) at dilution 1/30, on the right is treated with fusion protein. (Original magnification: ×200)

#### ELISA

Recommended dilution: 2000-5000

联系电话: 4008-898-798, 021-61725725

联系QQ: 2881505695, 2881505696

邮箱: [mlbio\\_cn@yeah.net](mailto:mlbio_cn@yeah.net)

网址: [www.mlbio.cn](http://www.mlbio.cn)