

Anti-CADM4 antibody

Cat. No.	ml161503
Package	25 µl/100 µl/200 µl
Storage	-20°C, pH7.4 PBS, 0.05% NaN ₃ , 40% Glycerol

Product overview

Description	Anti-CADM4 rabbit polyclonal antibody
Applications	ELISA, WB, IHC
Immunogen	Synthetic peptide of human CADM4
Reactivity	Human, Mouse, Rat
Content	0.5 mg/ml
Host species	Rabbit
Ig class	Immunogen-specific rabbit IgG
Purification	Antigen affinity purification

Target information

Symbol	CADM4
Full name	cell adhesion molecule 4
Synonyms	NECL4; TSLL2; IGSF4C; Necl-4; synCAM4
Swissprot	Q8NFZ8

Target Background

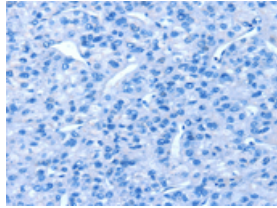
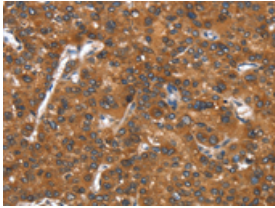
IGSF4C (immunoglobulin superfamily member 4C), also known as CADM4 (cell adhesion molecule 4), NECL4 or TSLL2, is a 388 amino acid single-pass type I membrane protein that contains one Ig-like V-type domain and two Ig-like C2-type domains. Expressed in kidney, brain and prostate, IGSF4C exists as both a monomer and a homodimer and is thought to be involved in cell-cell adhesion, possibly playing a role in tumor suppression. Human IGSF4C shares 98% sequence identity with its mouse counterpart, suggesting a conserved role between species. The gene encoding IGSF4C maps to human chromosome 19, which is the genetic home for a number of immunoglobulin superfamily members, including the killer cell and leukocyte Ig-like receptors, a number of ICAMs, the CEACAM and PSG family and Fc receptors (FcRs)

订购热线: 4008-898-798

Applications

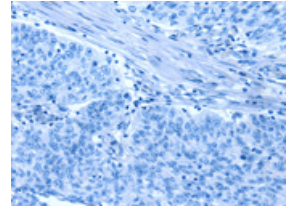
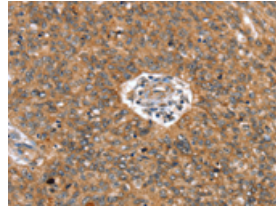
Immunohistochemistry

Predicted cell location: Cytoplasm
Positive control: Human liver cancer
Recommended dilution: 25-100



The image on the left is immunohistochemistry of paraffin-embedded Human liver cancer tissue using ml161503(CADM4 Antibody) at dilution 1/25, on the right is treated with synthetic peptide. (Original magnification: ×200)

Predicted cell location: Cytoplasm
Positive control: Human ovarian cancer
Recommended dilution: 25-100



The image on the left is immunohistochemistry of paraffin-embedded Human ovarian cancer tissue using ml161503(CADM4 Antibody) at dilution 1/25, on the right is treated with synthetic peptide. (Original magnification: ×200)

Western blotting

Predicted band size: 43 kDa
Positive control: RAW264.7 cells and mouse brain tissue
Recommended dilution: 200-1000

Gel: 10% SDS-PAGE

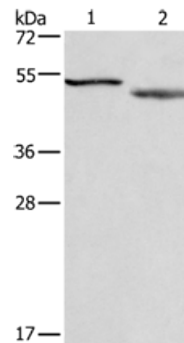
Lysate: 40 µg

Lane 1-2: RAW264.7 cells, mouse brain tissue

Primary antibody: ml161503(CADM4 Antibody) at dilution 1/300

Secondary antibody: Goat anti rabbit IgG at 1/8000 dilution

Exposure time: 20 seconds



ELISA

Recommended dilution: 1000-2000

联系电话: 4008-898-798, 021-61725725

联系QQ: 2881505695, 2881505696

邮箱: mlbio_cn@yeah.net

网址: www.mlbio.cn