

Anti-SIGLEC6 antibody

Cat. No.	ml161528
Package	25 µl/100 µl/200 µl
Storage	-20°C, pH7.4 PBS, 0.05% NaN ₃ , 40% Glycerol

Product overview

Description	Anti-SIGLEC6 rabbit polyclonal antibody
Applications	ELISA, WB, IHC
Immunogen	Synthetic peptide of human SIGLEC6
Reactivity	Human
Content	1.8 mg/ml
Host species	Rabbit
Ig class	Immunogen-specific rabbit IgG
Purification	Antigen affinity purification

Target information

Symbol	SIGLEC6
Full name	sialic acid binding Ig like lectin 6
Synonyms	CD327; CD33L; OBBP1; CD33L1; CD33L2; CDW327
Swissprot	O43699

Target Background

This gene encodes a member of the SIGLEC (sialic acid binding immunoglobulin-like lectin) family of proteins. The encoded transmembrane receptor binds sialyl-TN glycans and leptin. Placental expression of the encoded protein is upregulated in preeclampsia.

订购热线: 4008-898-798

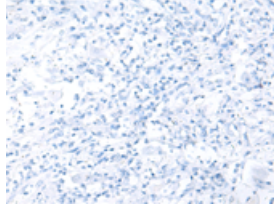
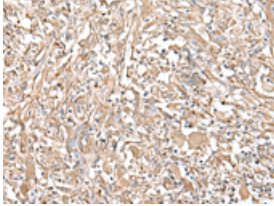
Applications

Immunohistochemistry

Predicted cell location: Secreted and Cell membrane

Positive control: Human liver cancer

Recommended dilution: 50-300

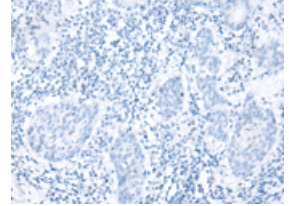
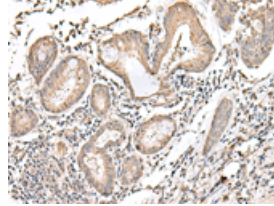


The image on the left is immunohistochemistry of paraffin-embedded Human liver cancer tissue using ml161528(SIGLEC6 Antibody) at dilution 1/60, on the right is treated with synthetic peptide. (Original magnification: $\times 200$)

Predicted cell location: Secreted and Cell membrane

Positive control: Human esophagus cancer

Recommended dilution: 50-300



The image on the left is immunohistochemistry of paraffin-embedded Human esophagus cancer tissue using ml161528(SIGLEC6 Antibody) at dilution 1/60, on the right is treated with synthetic peptide. (Original magnification: $\times 200$)

Western blotting

Predicted band size: 50 kDa

Positive control: A549 cell lysate

Recommended dilution: 200-1000

Gel: 8%SDS-PAGE

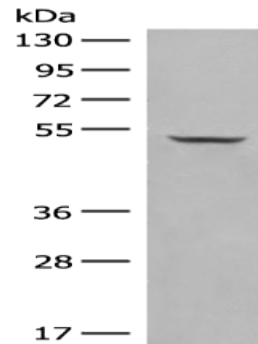
Lysate: 40 μ g

Lane: A549 cell lysate

Primary antibody: ml161528(SIGLEC6 Antibody) at dilution 1/200

Secondary antibody: Goat anti rabbit IgG at 1/8000 dilution

Exposure time: 40 seconds



ELISA

Recommended dilution: 5000-10000

联系电话: 4008-898-798, 021-61725725

联系QQ: 2881505695, 2881505696

邮箱: mlbio_cn@yeah.net

网址: www.mlbio.cn