

## Anti-UBE2Z antibody

<b>Cat. No.</b>	ml223952
<b>Package</b>	25 µl/100 µl/200 µl
<b>Storage</b>	-20°C, pH7.4 PBS, 0.05% NaN <sub>3</sub> , 40% Glycerol

### Product overview

<b>Description</b>	Anti-UBE2Z rabbit polyclonal antibody
<b>Applications</b>	ELISA, WB, IHC
<b>Immunogen</b>	Fusion protein of human UBE2Z
<b>Reactivity</b>	Human, Mouse, Rat
<b>Content</b>	0.8 mg/ml
<b>Host species</b>	Rabbit
<b>Ig class</b>	Immunogen-specific rabbit IgG
<b>Purification</b>	Antigen affinity purification

### Target information

<b>Symbol</b>	UBE2Z
<b>Full name</b>	ubiquitin conjugating enzyme E2Z

**Synonyms** USE1; HOYS7

**Swissprot** Q9H832

#### **Target Background**

This gene encodes an enzyme which ubiquitinates proteins which participate in signaling pathways and apoptosis.

## Applications

### Immunohistochemistry

Predicted cell location: Nucleus

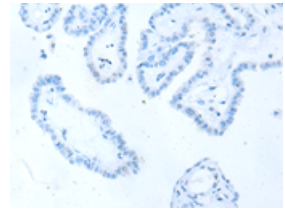
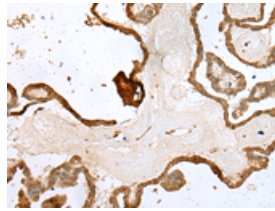
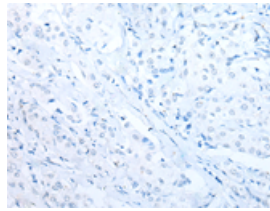
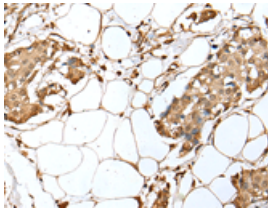
Predicted cell location: Nucleus

Positive control: Human breast cancer

Positive control: Human thyroid cancer

Recommended dilution: 25-100

Recommended dilution: 25-100



The image on the left is immunohistochemistry of paraffin-embedded Human breast cancer tissue using ml223952(UBE2Z Antibody) at dilution 1/35, on the right is treated with fusion protein. (Original magnification:  $\times 200$ )

The image on the left is immunohistochemistry of paraffin-embedded Human thyroid cancer tissue using ml223952(UBE2Z Antibody) at dilution 1/35, on the right is treated with fusion protein. (Original magnification:  $\times 200$ )

### Western blotting

Predicted band size: 38 kDa

Positive control: Human testis tissue, NIH/3T3 and 231 cell lysates

Recommended dilution: 500-2000

订购热线: 4008-898-798

Gel: 8%SDS-PAGE

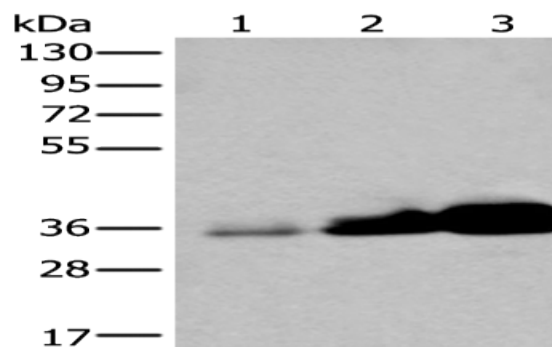
Lysate: 40  $\mu$ g

Lane 1-3: Human testis tissue,NIH/3T3 and 231 cell lysates

Primary antibody: ml223952(UBE2Z Antibody) at dilution 1/350

Secondary antibody: Goat anti rabbit IgG at 1/8000 dilution

Exposure time: 1 second



#### ELISA

Recommended dilution: 5000-10000

联系电话: 4008-898-798, 021-61725725

联系QQ: 2881505695, 2881505696

邮箱: [mlbio\\_cn@yeah.net](mailto:mlbio_cn@yeah.net)

网址: [www.mlbio.cn](http://www.mlbio.cn)