

Anti-NUF2 antibody

Cat. No.	ml161546
Package	25 µl/100 µl/200 µl
Storage	-20°C, pH7.4 PBS, 0.05% NaN ₃ , 40% Glycerol

Product overview

Description	Anti-NUF2 rabbit polyclonal antibody
Applications	ELISA, WB
Immunogen	Synthetic peptide of human NUF2
Reactivity	Human
Content	0.3 mg/ml
Host species	Rabbit
Ig class	Immunogen-specific rabbit IgG
Purification	Antigen affinity purification

Target information

Symbol	NUF2
Full name	NUF2, NDC80 kinetochore complex component
Synonyms	CDCA1; CT106; NUF2R
Swissprot	Q9BZD4

Target Background

This gene encodes a protein that is highly similar to yeast Nuf2, a component of a conserved protein complex associated with the centromere. Yeast Nuf2 disappears from the centromere during meiotic prophase when centromeres lose their connection to the spindle pole body, and plays a regulatory role in chromosome segregation.

订购热线: 4008-898-798

Applications

Western blotting

Predicted band size: 54 kDa

Positive control: Human normal liver tissue

Recommended dilution: 200-1000

Gel: 8%SDS-PAGE

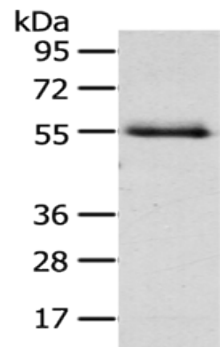
Lysate: 40 µg

Lane: Human normal liver tissue

Primary antibody: ml161546(NUF2 Antibody) at dilution 1/200

Secondary antibody: Goat anti rabbit IgG at 1/8000 dilution

Exposure time: 1 minute



ELISA

Recommended dilution: 1000-2000

联系电话: 4008-898-798, 021-61725725

联系QQ: 2881505695, 2881505696

邮箱: mlbio_cn@yeah.net

网址: www.mlbio.cn