

## Anti-MASP1 antibody

<b>Cat. No.</b>	ml220954
<b>Package</b>	25 µl/100 µl/200 µl
<b>Storage</b>	-20°C, pH7.4 PBS, 0.05% NaN <sub>3</sub> , 40% Glycerol

### Product overview

<b>Description</b>	Anti-MASP1 rabbit polyclonal antibody
<b>Applications</b>	ELISA, WB
<b>Immunogen</b>	Fusion protein of human MASP1
<b>Reactivity</b>	Human, Mouse, Rat
<b>Content</b>	0.5 mg/ml
<b>Host species</b>	Rabbit
<b>Ig class</b>	Immunogen-specific rabbit IgG
<b>Purification</b>	Antigen affinity purification

### Target information

<b>Symbol</b>	MASP1
<b>Full name</b>	mannan-binding lectin serine peptidase 1 (C4/C2 activating component of Ra-reactive factor)
<b>Synonyms</b>	3MC1; MAP1; MASP; RaRF; CRARF; MASP3; MAP44; PRSS5; CRARF1
<b>Swissprot</b>	P48740

### Target Background

This gene encodes a serine protease that functions as a component of the lectin pathway of complement activation. The complement pathway plays an essential role in the innate and adaptive immune response. The encoded protein is synthesized as a zymogen and is activated when it complexes with the pathogen recognition molecules of lectin pathway, the mannan-binding lectin and the ficolins. This protein is not directly involved in complement activation but may play a role as an amplifier of complement activation by cleaving complement C2 or by activating another complement serine protease, MASP-2. The encoded protein is also able to cleave fibrinogen and factor XIII and may be involved in coagulation. A splice variant of this gene which lacks the serine protease domain functions as an inhibitor of the complement pathway. Alternate splicing results in multiple transcript variants.

订购热线: 4008-898-798

**Applications**

**Western blotting**

Predicted band size:79 kDa

Positive control:Mouse brain tissue,Human heart tissue,Rat liver tissue,Mouse heart tissue,Mouse liver tissue,Hela cell lysates

Recommended dilution: 200-1000

Gel: 8%SDS-PAGE

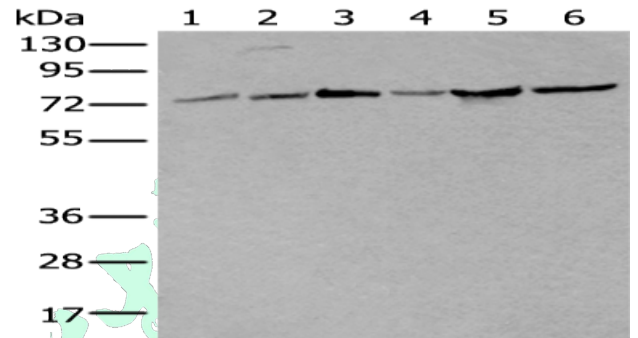
Lysate: 40 µg

Lane 1-6: Mouse brain tissue,Human heart tissue,Rat liver tissue,Mouse heart tissue,Mouse liver tissue,Hela cell lysates

Primary antibody: ml220954(MASP1 Antibody) at dilution 1/200

Secondary antibody: Goat anti rabbit IgG at 1/8000 dilution

Exposure time: 15 seconds



**ELISA**

Recommended dilution:500-1000

联系电话: 4008-898-798, 021-61725725

联系QQ: 2881505695, 2881505696

邮箱: [mlbio\\_cn@yeah.net](mailto:mlbio_cn@yeah.net)

网址: [www.mlbio.cn](http://www.mlbio.cn)