

Anti-CEACAM1 antibody

Cat. No.	ml220408
Package	25 µl/100 µl/200 µl
Storage	-20°C, pH7.4 PBS, 0.05% NaN ₃ , 40% Glycerol

Product overview

Description	Anti-CEACAM1 rabbit polyclonal antibody
Applications	ELISA, WB
Immunogen	Fusion protein of human CEACAM1
Reactivity	Human
Content	0.3 mg/ml
Host species	Rabbit
Ig class	Immunogen-specific rabbit IgG
Purification	Antigen affinity purification

Target information

Symbol	CEACAM1
Full name	carcinoembryonic antigen-related cell adhesion molecule 1 (biliary glycoprotein)
Synonyms	BGP, BGP1, BGPI
Swissprot	P13688

Target Background

This gene encodes a member of the carcinoembryonic antigen (CEA) gene family, which belongs to the immunoglobulin superfamily. Two subgroups of the CEA family, the CEA cell adhesion molecules and the pregnancy-specific glycoproteins, are located within a 1.2 Mb cluster on the long arm of chromosome 19. Eleven pseudogenes of the CEA cell adhesion molecule subgroup are also found in the cluster. The encoded protein was originally described in bile ducts of liver as biliary glycoprotein. Subsequently, it was found to be a cell-cell adhesion molecule detected on leukocytes, epithelia, and endothelia. The encoded protein mediates cell adhesion via homophilic as well as heterophilic binding to other proteins of the subgroup. Multiple cellular activities have been attributed to the encoded protein, including roles in the differentiation and arrangement of tissue three-dimensional structure, angiogenesis, apoptosis, tumor suppression, metastasis, and the modulation of innate and adaptive immune responses.

订购热线: 4008-898-798

Applications

Western blotting

Predicted band size:58 kDa

Positive control:Human bladder carcinoma and liver cancer tissue

Recommended dilution: 200-1000

Gel: 10%SDS-PAGE

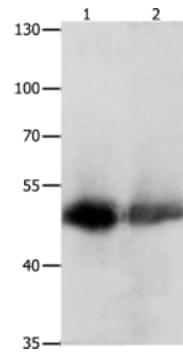
Lysate: 60 µg

Lane 1-2: Human bladder carcinoma tissue, Human liver cancer tissue

Primary antibody: ml220408(CEACAM1 Antibody) at dilution 1/300

Secondary antibody: Goat anti rabbit IgG at 1/8000 dilution

Exposure time: 30 minutes



ELISA

Recommended dilution:1000-2000

联系电话: 4008-898-798, 021-61725725

联系QQ: 2881505695, 2881505696

邮箱: mlbio_cn@yeah.net

网址: www.mlbio.cn