

Anti-NME3 antibody

Cat. No.	ml221042
Package	25 µl/100 µl/200 µl
Storage	-20°C, pH7.4 PBS, 0.05% NaN ₃ , 40% Glycerol

Product overview

Description	Anti-NME3 rabbit polyclonal antibody
Applications	ELISA, WB
Immunogen	Fusion protein of human NME3
Reactivity	Human, Mouse
Content	0.4 mg/ml
Host species	Rabbit
Ig class	Immunogen-specific rabbit IgG
Purification	Antigen affinity purification

Target information

Symbol	NME3
Full name	NME/NM23 nucleoside diphosphate kinase 3
Synonyms	NDPKC, NDPK-C, NM23H3, DR-nm23, NM23-H3, c371H6.2
Swissprot	Q13232

Target Background

Nucleoside diphosphate kinase 3 is an enzyme that in humans is encoded by the NME3 gene. Major role in the synthesis of nucleoside triphosphates other than ATP. The ATP gamma phosphate is transferred to the NDP beta phosphate via a ping-pong mechanism, using a phosphorylated active-site intermediate. Probably has a role in normal hematopoiesis by inhibition of granulocyte differentiation and induction of apoptosis.

订购热线: 4008-898-798

Applications

Western blotting

Predicted band size:19 kDa

Positive control:Mouse kidney tissue

Recommended dilution: 500-2000

Gel: 12%SDS-PAGE

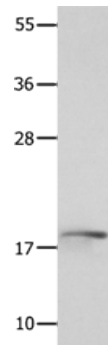
Lysate: 40 μ g

Lane: Mouse kidney tissue

Primary antibody: ml221042(NME3 Antibody) at dilution 1/800

Secondary antibody: Goat anti rabbit IgG at 1/8000 dilution

Exposure time: 1 minute



ELISA

Recommended dilution:2000-5000

联系电话: 4008-898-798, 021-61725725

联系QQ: 2881505695, 2881505696

邮箱: mlbio_cn@yeah.net

网址: www.mlbio.cn