

## Anti-OPCML antibody

<b>Cat. No.</b>	ml221076
<b>Package</b>	25 µl/100 µl/200 µl
<b>Storage</b>	-20°C, pH7.4 PBS, 0.05% NaN <sub>3</sub> , 40% Glycerol

### Product overview

<b>Description</b>	Anti-OPCML rabbit polyclonal antibody
<b>Applications</b>	ELISA, WB
<b>Immunogen</b>	Fusion protein of human OPCML
<b>Reactivity</b>	Human, Mouse, Rat
<b>Content</b>	0.3 mg/ml
<b>Host species</b>	Rabbit
<b>Ig class</b>	Immunogen-specific rabbit IgG
<b>Purification</b>	Antigen affinity purification

### Target information

<b>Symbol</b>	OPCML
<b>Full name</b>	opioid binding protein/cell adhesion molecule-like
<b>Synonyms</b>	OPCM, OBCAM, IGLON1
<b>Swissprot</b>	Q14982

### Target Background

This gene encodes a member of the IGLON subfamily in the immunoglobulin protein superfamily. The encoded protein is localized in the plasma membrane and may have an accessory role in opioid receptor function. This gene has an ortholog in rat and bovine. The opioid binding-cell adhesion molecule encoded by the rat gene binds opioid alkaloids in the presence of acidic lipids, exhibits selectivity for mu ligands and acts as a GPI-anchored protein. Since the encoded protein is highly conserved in species during evolution, it may have a fundamental role in mammalian systems. Two transcript variants encoding different isoforms have been found for this gene.

订购热线: 4008-898-798

**Applications**

**Western blotting**

Predicted band size:38 kDa

Positive control:Mouse brain tissue

Recommended dilution: 500-2000

Gel: 10%SDS-PAGE

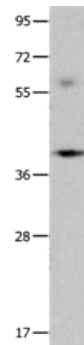
Lysate: 40  $\mu$ g

Lane: Mouse brain tissue

Primary antibody: ml221076(OPCML Antibody) at dilution 1/400

Secondary antibody: Goat anti rabbit IgG at 1/8000 dilution

Exposure time: 1 minute



**ELISA**

Recommended dilution:2000-5000

联系电话: 4008-898-798, 021-61725725

联系QQ: 2881505695, 2881505696

邮箱: mlbio\_cn@yeah.net

网址: www.mlbio.cn