

Anti-COX7A2L antibody

Cat. No.	ml220471
Package	25 µl/100 µl/200 µl
Storage	-20°C, pH7.4 PBS, 0.05% NaN ₃ , 40% Glycerol

Product overview

Description	Anti-COX7A2L rabbit polyclonal antibody
Applications	ELISA, WB, IHC
Immunogen	Full length fusion protein
Reactivity	Human, Mouse
Content	2.2 mg/ml
Host species	Rabbit
Ig class	Immunogen-specific rabbit IgG
Purification	Antigen affinity purification

Target information

Symbol	COX7A2L
Full name	cytochrome c oxidase subunit 7A2 like

Synonyms EB1; SIG81; COX7AR; COX7RP

Swissprot O14548

Target Background

Cytochrome c oxidase (COX), the terminal component of the mitochondrial respiratory chain, catalyzes the electron transfer from reduced cytochrome c to oxygen. This component is a heteromeric complex consisting of 3 catalytic subunits encoded by mitochondrial genes and multiple structural subunits encoded by nuclear genes. The mitochondrially-encoded subunits function in electron transfer, and the nuclear-encoded subunits may function in the regulation and assembly of the complex. This nuclear gene encodes a protein similar to polypeptides 1 and 2 of subunit VIIa in the C-terminal region, and also highly similar to the mouse Sig81 protein sequence. This gene is expressed in all tissues, and upregulated in a breast cancer cell line after estrogen treatment. It is possible that this gene represents a regulatory subunit of COX and mediates the higher level of energy production in target cells by estrogen. Several transcript variants, some protein-coding and others non-protein coding, have been found for this gene.

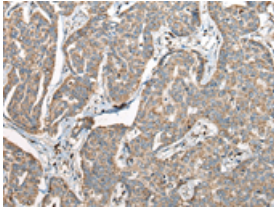
Applications

Immunohistochemistry

Predicted cell location: Mitochondrion inner membrane

Positive control: Human liver cancer

Recommended dilution: 30-150

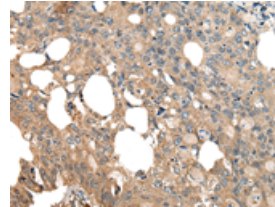


The image is immunohistochemistry of paraffin-embedded Human liver cancer tissue using ml220471(COX7A2L Antibody) at dilution 1/30. (Original magnification: ×200)

Predicted cell location: Mitochondrion inner membrane

Positive control: Human colorectal cancer

Recommended dilution: 30-150



The image is immunohistochemistry of paraffin-embedded Human colorectal cancer tissue using ml220471(COX7A2L Antibody) at dilution 1/30. (Original magnification: ×200)

Western blotting

Predicted band size: 13 kDa

Positive control: Mouse brain tissue and Mouse adrenal gland tissue lysates

Recommended dilution: 200-1000

Gel: 12% SDS-PAGE

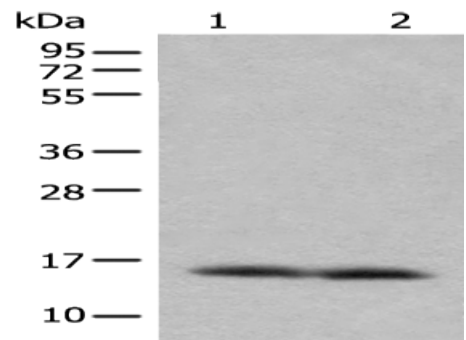
Lysate: 40 µg

Lane 1-2: Mouse brain tissue and Mouse adrenal gland tissue lysates

Primary antibody: ml220471(COX7A2L Antibody) at dilution 1/500

Secondary antibody: Goat anti rabbit IgG at 1/8000 dilution

Exposure time: 40 seconds



mlbio 酶联生物
Good elisakit producers
订购热线: 4008-898-798

ELISA

Recommended dilution: 5000-10000

联系电话: 4008-898-798, 021-61725725

联系QQ: 2881505695, 2881505696

邮箱: mlbio_cn@yeah.net

网址: www.mlbio.cn