

## Anti-SIRT6 antibody

|                 |   |
|-----------------|---|
| <b>Cat. No.</b> | ml221220  |
| <b>Package</b>  | 25 µl/100 µl/200 µl                                     |
| <b>Storage</b>  | -20°C, pH7.4 PBS, 0.05% NaN <sub>3</sub> , 40% Glycerol |

### Product overview

|                     |                                       |
|---------------------|---------------------------------------|
| <b>Description</b>  | Anti-SIRT6 rabbit polyclonal antibody |
| <b>Applications</b> | ELISA, WB                             |
| <b>Immunogen</b>    | Fusion protein of human SIRT6         |
| <b>Reactivity</b>   | Human, Mouse                          |
| <b>Content</b>      | 0.2 mg/ml                             |
| <b>Host species</b> | Rabbit                                |
| <b>Ig class</b>     | Immunogen-specific rabbit IgG         |
| <b>Purification</b> | Antigen affinity purification         |

### Target information

|                  |           |
|------------------|-----------|
| <b>Symbol</b>    | SIRT6     |
| <b>Full name</b> | Sirtuin 6 |
| <b>Synonyms</b>  | SIR2L6    |
| <b>Swissprot</b> | Q8N6T7    |

### Target Background

This gene encodes a member of the sirtuin family of proteins, homologs to the yeast Sir2 protein. Members of the sirtuin family are characterized by a sirtuin core domain and grouped into four classes. The functions of human sirtuins have not yet been determined; however, yeast sirtuin proteins are known to regulate epigenetic gene silencing and suppress recombination of rDNA. Studies suggest that the human sirtuins may function as intracellular regulatory proteins with mono-ADP-ribosyltransferase activity. The protein encoded by this gene is included in class IV of the sirtuin family. Alternative splicing results in multiple transcript variants.

订购热线: 4008-898-798

**Applications**

**Western blotting**

Predicted band size:39 kDa

Positive control:Mouse thymus tissue

Recommended dilution: 500-2000

Gel: 10%SDS-PAGE

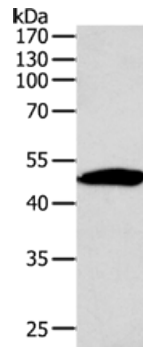
Lysate: 40  $\mu$ g

Lane: Mouse thymus tissue

Primary antibody: ml221220(SIRT6 Antibody) at dilution 1/350

Secondary antibody: Goat anti rabbit IgG at 1/8000 dilution

Exposure time: 1 minute



**ELISA**

Recommended dilution:2000-5000

联系电话: 4008-898-798, 021-61725725

联系QQ: 2881505695, 2881505696

邮箱: mlbio\_cn@yeah.net

网址: www.mlbio.cn