

## Anti-SDCCAG3 antibody

<b>Cat. No.</b>	ml220526
<b>Package</b>	25 µl/100 µl/200 µl
<b>Storage</b>	-20°C, pH7.4 PBS, 0.05% NaN <sub>3</sub> , 40% Glycerol

### Product overview

<b>Description</b>	Anti-SDCCAG3 rabbit polyclonal antibody
<b>Applications</b>	ELISA, WB
<b>Immunogen</b>	Fusion protein of human SDCCAG3
<b>Reactivity</b>	Human, Mouse
<b>Content</b>	0.7 mg/ml
<b>Host species</b>	Rabbit
<b>Ig class</b>	Immunogen-specific rabbit IgG
<b>Purification</b>	Antigen affinity purification

### Target information

<b>Symbol</b>	SDCCAG3
<b>Full name</b>	serologically defined colon cancer antigen 3
<b>Synonyms</b>	NY-CO-3
<b>Swissprot</b>	Q96C92

### Target Background

SDCCAG3 protein contains the region similar to the coiled-coil domain of the myosin tail. The same domain is present in the proteins related to the organelles/proteins trafficking, such as kinesin, Golgin-160, and dynein. SDCCAG3 function might be related to protein trafficking and secretion, May be involved in modulation of TNF response, May be involved in presentation of TNFRSF1A on the cell surface. Interaction of SDCCAG3 with the Arf GTPase activating protein GIT1 (G protein-coupled receptor kinase interactor-1). Overexpression of an ArfGAP-negative version of GIT1 also results in an increased number of multinucleate cells suggesting regulation of Arf-mediated vesicular trafficking or signaling via SDCCAG3.

订购热线: 4008-898-798

**Applications**

**Western blotting**

Predicted band size:46 kDa

Positive control:Hela cells

Recommended dilution: 500-2000

Gel: 8%SDS-PAGE

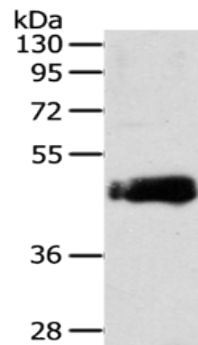
Lysate: 40 µg

Lane: Hela cells

Primary antibody: ml220526(SDCCAG3 Antibody) at dilution 1/235

Secondary antibody: Goat anti rabbit IgG at 1/8000 dilution

Exposure time: 2 minutes



**ELISA**

Recommended dilution:2000-5000

联系电话: 4008-898-798, 021-61725725

联系QQ: 2881505695, 2881505696

邮箱: mlbio\_cn@yeah.net

网址: www.mlbio.cn