

Anti-CLEC4A antibody

Cat. No.	ml220528
Package	25 µl/100 µl/200 µl
Storage	-20°C, pH7.4 PBS, 0.05% NaN ₃ , 40% Glycerol

Product overview

Description	Anti-CLEC4A rabbit polyclonal antibody
Applications	ELISA, WB, IHC
Immunogen	Fusion protein of human CLEC4A
Reactivity	Human, Mouse
Content	0.3 mg/ml
Host species	Rabbit
Ig class	Immunogen-specific rabbit IgG
Purification	Antigen affinity purification

Target information

Symbol	CLEC4A
Full name	C-type lectin domain family 4, member A

Synonyms DCIR, LLIR, DDB27, CLECSF6, HDCGC13P

Swissprot Q9UMR7

Target Background

This gene encodes a member of the C-type lectin/C-type lectin-like domain (CTL/CTLD) superfamily. Members of this family share a common protein fold and have diverse functions, such as cell adhesion, cell-cell signalling, glycoprotein turnover, and roles in inflammation and immune response. The encoded type 2 transmembrane protein may play a role in inflammatory and immune response. Multiple transcript variants encoding distinct isoforms have been identified for this gene. This gene is closely linked to other CTL/CTLD superfamily members on chromosome 12p13 in the natural killer gene complex region.

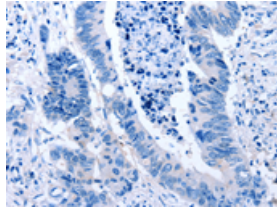
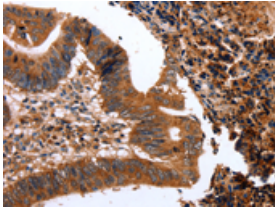
Applications

Immunohistochemistry

Predicted cell location: Cytoplasm

Positive control: Human colon cancer

Recommended dilution: 50-200

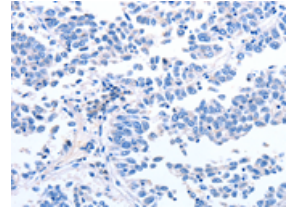
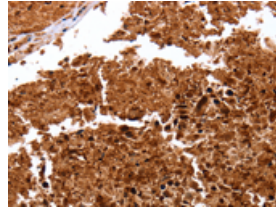


The image on the left is immunohistochemistry of paraffin-embedded Human colon cancer tissue using ml220528(CLEC4A Antibody) at dilution 1/15, on the right is treated with fusion protein. (Original magnification: ×200)

Predicted cell location: Cytoplasm

Positive control: Human lung cancer

Recommended dilution: 50-200



The image on the left is immunohistochemistry of paraffin-embedded Human lung cancer tissue using ml220528(CLEC4A Antibody) at dilution 1/15, on the right is treated with fusion protein. (Original magnification: ×200)

Western blotting

Predicted band size: 28 kDa

Positive control: RAW264.7, HeLa, 823 and A549 cells

Recommended dilution: 200-1000

订购热线: 4008-898-798

Gel: 12+15%SDS-PAGE

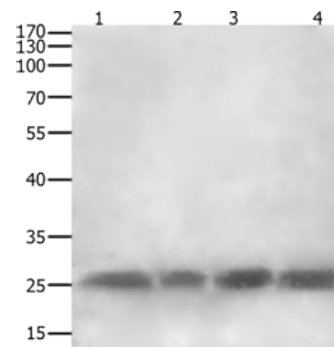
Lysate: 40 µg

Lane 1-4: RAW264.7, Hela cells, 823 cells, A549 cells

Primary antibody: ml220528(CLEC4A Antibody) at dilution 1/300

Secondary antibody: Goat anti rabbit IgG at 1/8000 dilution

Exposure time: 10 minutes



ELISA

Recommended dilution: 1000-5000

联系电话: 4008-898-798, 021-61725725

联系QQ: 2881505695, 2881505696

邮箱: mlbio_cn@yeah.net

网址: www.mlbio.cn