

Anti-WDFY3 antibody

Cat. No.	ml224087
Package	25 µl/100 µl/200 µl
Storage	-20°C, pH7.4 PBS, 0.05% NaN ₃ , 40% Glycerol

Product overview

Description	Anti-WDFY3 rabbit polyclonal antibody
Applications	ELISA, WB, IHC
Immunogen	Fusion protein of human WDFY3
Reactivity	Human, Mouse
Content	1.1 mg/ml
Host species	Rabbit
Ig class	Immunogen-specific rabbit IgG
Purification	Antigen affinity purification

Target information

Symbol	WDFY3
Full name	WD repeat and FYVE domain containing 3

Synonyms ALFY; ZFYVE25

Swissprot Q8IZQ1

Target Background

This gene encodes a phosphatidylinositol 3-phosphate-binding protein that functions as a master conductor for aggregate clearance by autophagy. This protein shuttles from the nuclear membrane to colocalize with aggregated proteins, where it complexes with other autophagic components to achieve macroautophagy-mediated clearance of these aggregated proteins. However, it is not necessary for starvation-induced macroautophagy.

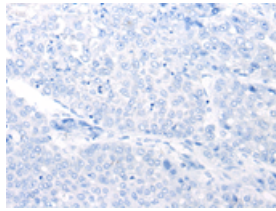
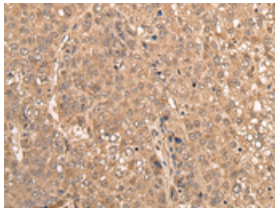
Applications

Immunohistochemistry

Predicted cell location: Cytoplasm and Nucleus

Positive control: Human liver cancer

Recommended dilution: 50-300

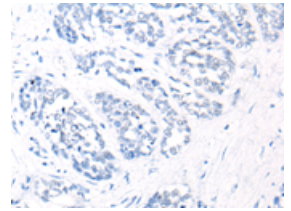
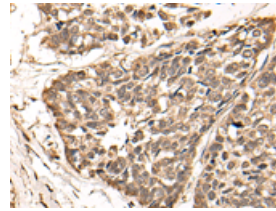


The image on the left is immunohistochemistry of paraffin-embedded Human liver cancer tissue using ml224087(WDFY3 Antibody) at dilution 1/70, on the right is treated with fusion protein. (Original magnification: $\times 200$)

Predicted cell location: Cytoplasm and Nucleus

Positive control: Human esophagus cancer

Recommended dilution: 50-300



The image on the left is immunohistochemistry of paraffin-embedded Human esophagus cancer tissue using ml224087(WDFY3 Antibody) at dilution 1/70, on the right is treated with fusion protein. (Original magnification: $\times 200$)

Western blotting

Predicted band size: 395 kDa

Positive control: Hela cell lysate

Recommended dilution: 200-1000

订购热线: 4008-898-798

Gel: 6%SDS-PAGE

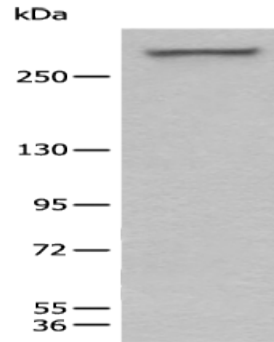
Lysate: 40 μ g

Lane: Hela cell lysate

Primary antibody: ml224087(WDFY3 Antibody) at dilution 1/650

Secondary antibody: Goat anti rabbit IgG at 1/8000 dilution

Exposure time: 1 second



ELISA

Recommended dilution: 5000-10000

联系电话: 4008-898-798, 021-61725725

联系QQ: 2881505695, 2881505696

邮箱: mlbio_cn@yeah.net

网址: www.mlbio.cn