

Anti-WDFY2 antibody

Cat. No.	ml224090
Package	25 µl/100 µl/200 µl
Storage	-20°C, pH7.4 PBS, 0.05% NaN ₃ , 40% Glycerol

Product overview

Description	Anti-WDFY2 rabbit polyclonal antibody
Applications	ELISA, WB, IHC
Immunogen	Fusion protein of human WDFY2
Reactivity	Human, Mouse
Content	0.6 mg/ml
Host species	Rabbit
Ig class	Immunogen-specific rabbit IgG
Purification	Antigen affinity purification

Target information

Symbol	WDFY2
Full name	WD repeat and FYVE domain containing 2

Synonyms PROF; WDF2; ZFYVE22

Swissprot Q96P53

Target Background

WD repeat and FYVE domain-containing protein 2 (WDFY2), also known as WDF2 and ZFYVE22, is a 400 amino acid protein that localizes to a set of small endosomes that are found within 100 nm from the plasma membrane. Highly conserved between species, WDFY2 consists of one FYVE-type zinc finger and seven WD repeats. The FYVE domain is a cysteine-rich domain of about 70 amino acids. Its primary role is to target signal-transducing proteins to cell membranes through binding to the membrane lipid phosphatidylinositol-3-phosphate with high specificity. WD-repeats are generally found in clusters of seven. They have no intrinsic catalytic activity, but they serve as a platform for protein-protein interactions. WDFY2 is suspected to play a critical role in the endocytic pathway.

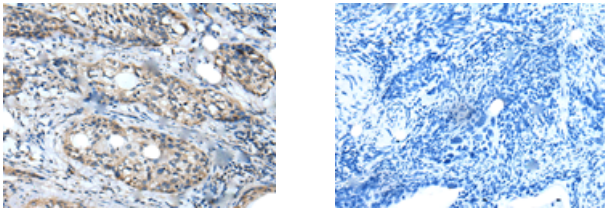
Applications

Immunohistochemistry

Predicted cell location: Cytoplasm

Positive control: Human cervical cancer

Recommended dilution: 30-150



The image on the left is immunohistochemistry of paraffin-embedded Human cervical cancer tissue using ml224090(WDFY2 Antibody) at dilution 1/40, on the right is treated with fusion protein. (Original magnification: $\times 200$)

Western blotting

Predicted band size: 45 kDa

Positive control: Mouse kidney tissue lysate

Recommended dilution: 500-2000

订购热线: 4008-898-798

Gel: 8%SDS-PAGE

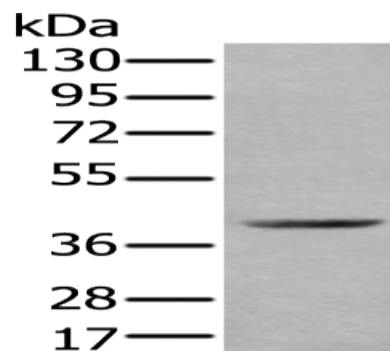
Lysate: 40 μ g

Lane: Mouse kidney tissue lysate

Primary antibody: ml224090(WDFY2 Antibody) at dilution 1/350

Secondary antibody: Goat anti rabbit IgG at 1/8000 dilution

Exposure time: 15 seconds



ELISA

Recommended dilution: 5000-10000

联系电话: 4008-898-798, 021-61725725

联系QQ: 2881505695, 2881505696

邮箱: mlbio_cn@yeah.net

网址: www.mlbio.cn