

Anti-VCP antibody

Cat. No.	ml224099
Package	25 µl/100 µl/200 µl
Storage	-20°C, pH7.4 PBS, 0.05% NaN ₃ , 40% Glycerol

Product overview

Description	Anti-VCP rabbit polyclonal antibody
Applications	ELISA, WB, IHC
Immunogen	Fusion protein of human VCP
Reactivity	Human, Mouse, Rat
Content	0.5 mg/ml
Host species	Rabbit
Ig class	Immunogen-specific rabbit IgG
Purification	Antigen affinity purification

Target information

Symbol	VCP
Full name	valosin containing protein

Synonyms p97; TERA; ALS14; IBMPFD; HEL-220; IBMPFD1; HEL-S-70

Swissprot P55072

Target Background

The protein encoded by this gene is a member of a family that includes putative ATP-binding proteins involved in vesicle transport and fusion, 26S proteasome function, and assembly of peroxisomes. This protein, as a structural protein, is associated with clathrin, and heat-shock protein Hsc70, to form a complex. It has been implicated in a number of cellular events that are regulated during mitosis, including homotypic membrane fusion, spindle pole body function, and ubiquitin-dependent protein degradation.

Applications

Immunohistochemistry

Predicted cell location: Nucleus and Cytoplasm

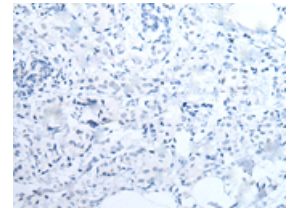
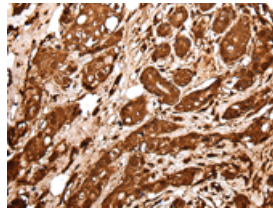
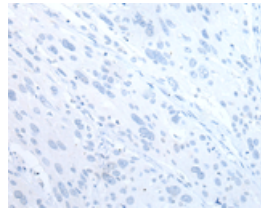
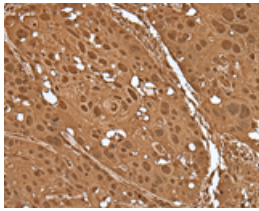
Predicted cell location: Nucleus and Cytoplasm

Positive control: Human esophagus cancer

Positive control: Human breast cancer

Recommended dilution: 30-150

Recommended dilution: 30-150



The image on the left is immunohistochemistry of paraffin-embedded Human esophagus cancer tissue using ml224099(VCP Antibody) at dilution 1/30, on the right is treated with fusion protein. (Original magnification: $\times 200$)

The image on the left is immunohistochemistry of paraffin-embedded Human breast cancer tissue using ml224099(VCP Antibody) at dilution 1/30, on the right is treated with fusion protein. (Original magnification: $\times 200$)

Western blotting

Predicted band size: 89 kDa

Positive control: 231, Hela, A549, A431, HEPG2, Jurkat and K562 cell lysates

Recommended dilution: 500-2000

订购热线: 4008-898-798

Gel: 6%SDS-PAGE

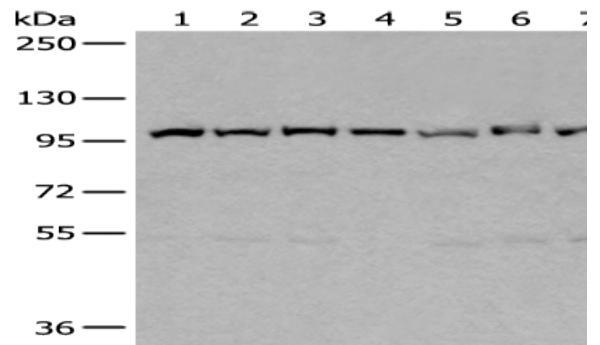
Lysate: 40 μ g

Lane 1-7: 231,Hela,A549,A431,HEPG2,Jurkat and K562 cell lysates

Primary antibody: ml224099(VCP Antibody) at dilution 1/400

Secondary antibody: Goat anti rabbit IgG at 1/8000 dilution

Exposure time: 1 second



ELISA

Recommended dilution: 5000-10000

联系电话: 4008-898-798, 021-61725725

联系QQ: 2881505695, 2881505696

邮箱: mlbio_cn@yeah.net

网址: www.mlbio.cn