

Anti-ELN antibody

Cat. No.	ml220588
Package	25 µl/100 µl/200 µl
Storage	-20°C, pH7.4 PBS, 0.05% NaN ₃ , 40% Glycerol

Product overview

Description	Anti-ELN rabbit polyclonal antibody
Applications	ELISA, WB
Immunogen	Fusion protein of human ELN
Reactivity	Human
Content	0.4 mg/ml
Host species	Rabbit
Ig class	Immunogen-specific rabbit IgG
Purification	Antigen affinity purification

Target information

Symbol	ELN
Full name	elastin
Synonyms	WS, WBS, SVAS
Swissprot	P15502

Target Background

This gene encodes a protein that is one of the two components of elastic fibers. The encoded protein is rich in hydrophobic amino acids such as glycine and proline, which form mobile hydrophobic regions bounded by crosslinks between lysine residues. Deletions and mutations in this gene are associated with supravalvular aortic stenosis (SVAS) and autosomal dominant cutis laxa. Multiple transcript variants encoding different isoforms have been found for this gene.

订购热线: 4008-898-798

Applications

Western blotting

Predicted band size:68 kDa

Positive control:Human hepatocellular carcinoma tissue

Recommended dilution: 500-2000

Gel: 10%SDS-PAGE

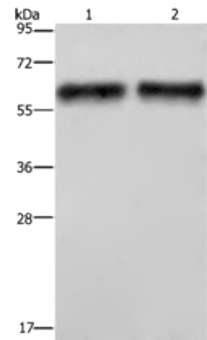
Lysate: 40 µg, 60 µg

Lane: Human hepatocellular carcinoma tissue

Primary antibody: ml220588(ELN Antibody) at dilution 1/400

Secondary antibody: Goat anti rabbit IgG at 1/8000 dilution

Exposure time: 2 minutes



ELISA

Recommended dilution:2000-5000

联系电话: 4008-898-798, 021-61725725

联系QQ: 2881505695, 2881505696

邮箱: mlbio_cn@yeah.net

网址: www.mlbio.cn