

Anti-KHK antibody

Cat. No.	ml264350
Package	25 µl/100 µl/200 µl
Storage	-20°C, pH7.4 PBS, 0.05% NaN ₃ , 40% Glycerol

Product overview

Description	Anti-KHK rabbit polyclonal antibody
Applications	ELISA, WB
Immunogen	Synthetic peptide of human KHK
Reactivity	Human, Mouse
Content	1.38 mg/ml
Host species	Rabbit
Ig class	Immunogen-specific rabbit IgG
Purification	Antigen affinity purification

Target information

Symbol	KHK
Full name	ketoheokinase
Synonyms	
Swissprot	P50053

Target Background

This gene encodes ketoheokinase that catalyzes conversion of fructose to fructose-1-phosphate. The product of this gene is the first enzyme with a specialized pathway that catabolizes dietary fructose. Alternatively spliced transcript variants encoding different isoforms have been identified.

订购热线: 4008-898-798

Applications

Western blotting

Predicted band size:33 kDa

Positive control:HepG2, Hela cell, Mouse liver tissue lysates

Recommended dilution: 1000-5000

Gel: 8%SDS-PAGE

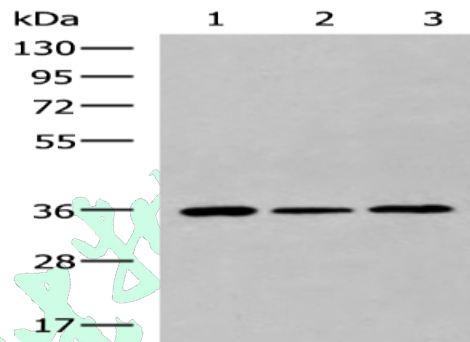
Lysate: 40 µg

Lane: HepG2, Hela cell, Mouse liver tissue lysates

Primary antibody: ml264350(KHK Antibody) at dilution 1/1000

Secondary antibody: Goat anti rabbit IgG at 1/5000 dilution

Exposure time: 40 seconds



ELISA

Recommended dilution:5000-10000

联系电话: 4008-898-798, 021-61725725

联系QQ: 2881505695, 2881505696

邮箱: mlbio_cn@yeah.net

网址: www.mlbio.cn