

## 兔抗 EPHA3 多克隆抗体

中文名称：兔抗 EPHA3 多克隆抗体

英文名称： Anti-EPHA3 rabbit polyclonal antibody

别名： EPH receptor A3; EK4; ETK; HEK; ETK1; HEK4; TYRO4

储存： 冷冻（-20℃）

宿主： Rabbit

相关类别： 一抗

反应种属： Human, Mouse, Rat

标记物： Unconjugate

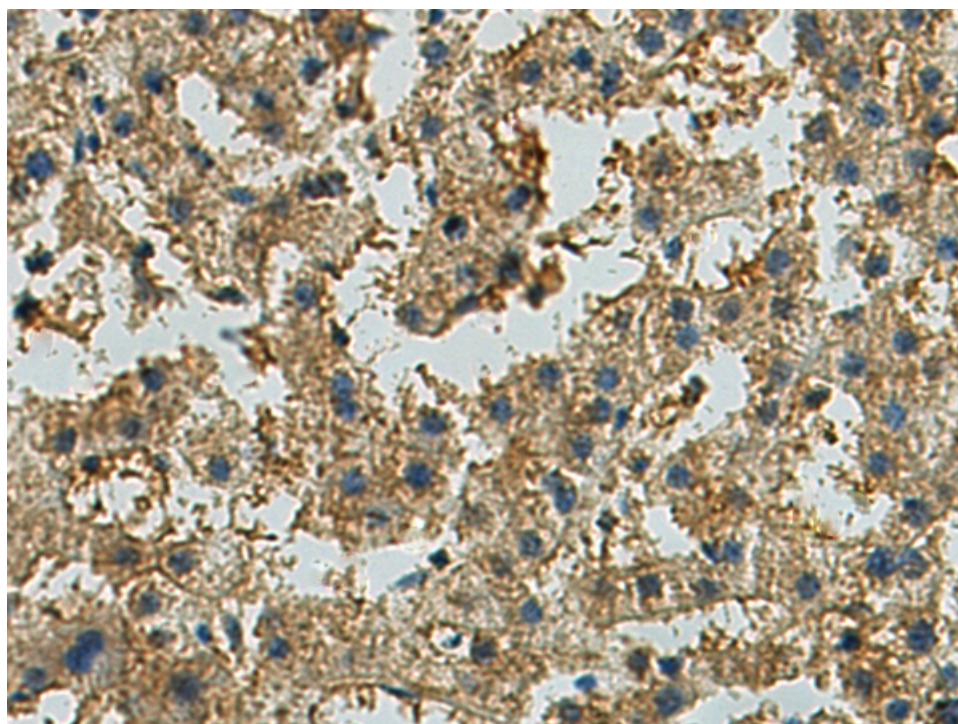
克隆类型： rabbit polyclonal

技术规格：

**Background:**

This gene belongs to the ephrin receptor subfamily of the protein-tyrosine kinase family. EPH and EPH-related receptors have been implicated in mediating developmental events, particularly in the nervous system. Receptors in the EPH subfamily typically have a single kinase domain and an extracellular region containing a Cys-rich domain and 2 fibronectin type III repeats. The ephrin receptors are divided into 2 groups based on the similarity of their extracellular domain sequences and their affinities for binding ephrin-A and ephrin-B ligands. This gene encodes a protein that binds ephrin-A ligands. Two alternatively spliced transcript variants have been described for this gene.

<b>Applications:</b>	ELISA, IHC
<b>Name of antibody:</b>	EPHA3
<b>Immunogen:</b>	Synthetic peptide of human EPHA3
<b>Full name:</b>	EPH receptor A3
<b>Synonyms:</b>	EK4; ETK; HEK; ETK1; HEK4; TYRO4
<b>SwissProt:</b>	P29320
<b>ELISA Recommended dilution:</b>	5000-10000
<b>IHC positive control:</b>	Human liver cancer and Human cervical cancer
<b>IHC Recommend dilution:</b>	50-100



**mlbio** 梅联生物  
Good elisakit producers

