

兔抗 ERN2 多克隆抗体

中文名称：兔抗 ERN2 多克隆抗体

英文名称：Anti-ERN2 rabbit polyclonal antibody

别名：IRE1b; IRE1-BETA

相关类别：一抗

储存：冷冻（-20℃）

宿主：Rabbit

抗原：ERN2

反应种属：Human

标记物：Unconjugate

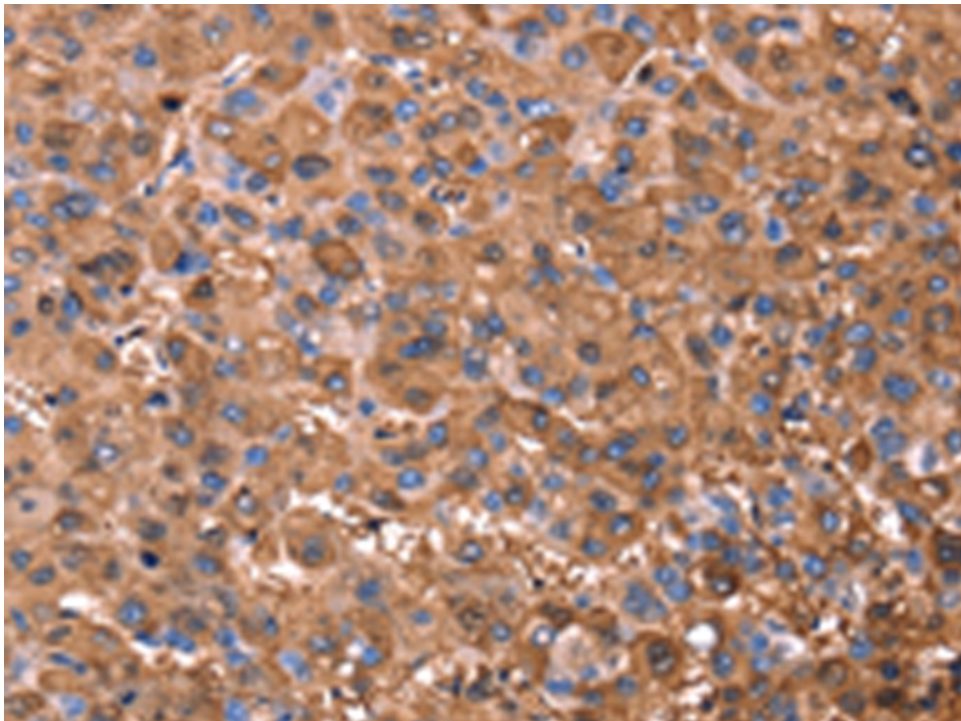
克隆类型：rabbit polyclonal

技术规格

Background:

The accumulation of unfolded proteins within the endoplasmic reticulum (ER) of yeast and mammalian cells activates the unfolded protein response (UPR) pathway and leads to the transcription of ER-specific genes involved in protein folding. The activation of the UPR requires the ER transmembrane kinase IRE1p (for inositol-requiring and ER-to-nucleus signaling protein). IRE1 α and IRE1 β are two mammalian homologs of the yeast IRE1p. These related proteins localize to the ER lumen and contain both a short transmembrane domain that spans the ER membrane and a cytosolic Ser/Thr kinase domain. IRE1 activation involves

| | |
|------------------------------------|--|
| | the oligomerization and trans-phosphorylation of the cytosolic portion of the proteins, which then potentiates its intrinsic kinase activity and, in turn, stimulates transcription of UPR-targeted genes. |
| Applications: | ELISA, IHC |
| Name of antibody: | ERN2 |
| Immunogen: | Synthetic peptide of human ERN2 |
| Full name: | endoplasmic reticulum to nucleus signaling 2 |
| Synonyms : | IRE1b; IRE1-BETA |
| SwissProt: | Q76MJ5 |
| ELISA Recommended dilution: | 2000-5000 |
| IHC positive control: | Human liver cancer and Human gastric cancer |
| IHC Recommend dilution: | 50-200 |



mlbio 梅联生物
Good elisakit producers