

Anti-SLC18A3 antibody

Cat. No.	ml151127
Package	25 µl/100 µl/200 µl
Storage	-20°C, pH7.4 PBS, 0.05% NaN ₃ , 40% Glycerol

Product overview

Description	Anti-SLC18A3 rabbit polyclonal antibody
Applications	ELISA, IF
Immunogen	Synthetic peptide of human SLC18A3
Reactivity	Human
Content	2.8 mg/ml
Host species	Rabbit
Ig class	Immunogen-specific rabbit IgG
Purification	Antigen affinity purification

Target information

Symbol	SLC18A3
Full name	solute carrier family 18 (vesicular acetylcholine), member 3
Synonyms	VACHT
Swissprot	Q16572

Target Background

This gene is a member of the vesicular amine transporter family. The encoded transmembrane protein transports acetylcholine into secretory vesicles for release into the extracellular space. Acetylcholine transport utilizes a proton gradient established by a vacuolar ATPase. This gene is located within the first intron of the choline acetyltransferase gene.

订购热线: 4008-898-798

Applications

ELISA

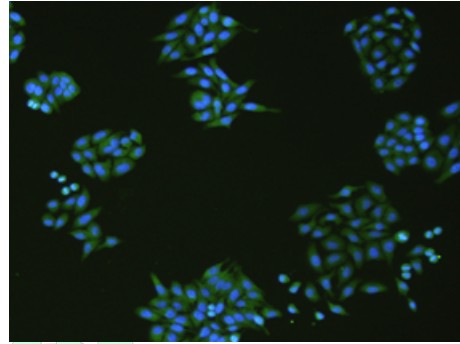
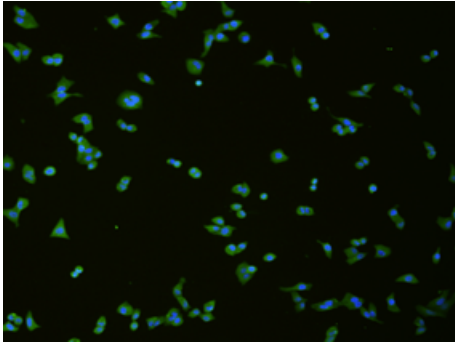
Recommended dilution: 5000-60000

Immunofluorescence

Predicted cell location: Cytoplasm

Positive control: Hela and HepG2 cell

Recommended dilution: 50-200



The image is immunofluorescence of Hela cell using ml151127(SLC18A3 Antibody) at dilution 1/50.

The image is immunofluorescence of HepG2 cell using ml151127(SLC18A3 Antibody) at dilution 1/50.

mlbio 酶联生物
Good elisakit producers

联系电话: 4008-898-798, 021-61725725

联系QQ: 2881505695, 2881505696

邮箱: mlbio_cn@yeah.net

网址: www.mlbio.cn

mlbio 酶联生物
Good elisakit producers

订购热线: 4008-898-798