

Anti-EPM2A antibody

Cat. No.	ml125186
Package	25 µl/100 µl/200 µl
Storage	-20°C, pH7.4 PBS, 0.05% NaN ₃ , 40% Glycerol

Product overview

Description	Anti-EPM2A rabbit polyclonal antibody
Applications	ELISA, IHC
Immunogen	Fusion protein of human EPM2A
Reactivity	Human, Mouse, Rat
Content	1.32 mg/ml
Host species	Rabbit
Ig class	Immunogen-specific rabbit IgG
Purification	Antigen affinity purification

Target information

Symbol	EPM2A
Full name	EPM2A, laforin glucan phosphatase
Synonyms	EPM2; MELF
Swissprot	O95278

Target Background

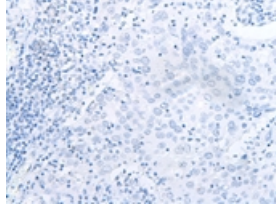
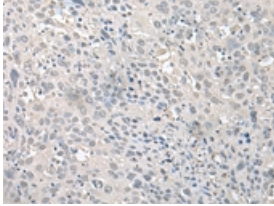
This gene encodes a dual-specificity phosphatase that associates with polyribosomes. The encoded protein may be involved in the regulation of glycogen metabolism. Mutations in this gene have been associated with myoclonic epilepsy of Lafora. Alternative splicing results in multiple transcript variants.

订购热线: 4008-898-798

Applications

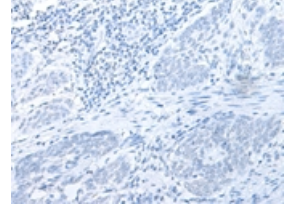
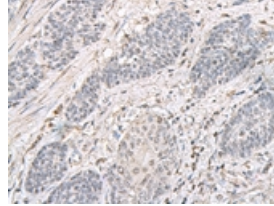
Immunohistochemistry

Predicted cell location: Cytoplasm and Nucleus
Positive control: Human cervical cancer
Recommended dilution: 50-300



The image on the left is immunohistochemistry of paraffin-embedded Human cervical cancer tissue using ml125186(EPM2A Antibody) at dilution 1/75, on the right is treated with fusion protein. (Original magnification: $\times 200$)

Predicted cell location: Cytoplasm and Nucleus
Positive control: Human esophagus cancer
Recommended dilution: 50-300



The image on the left is immunohistochemistry of paraffin-embedded Human esophagus cancer tissue using ml125186(EPM2A Antibody) at dilution 1/75, on the right is treated with fusion protein. (Original magnification: $\times 200$)

ELISA

Recommended dilution: 5000-10000

联系电话: 4008-898-798, 021-61725725

联系QQ: 2881505695, 2881505696

邮箱: mlbio_cn@yeah.net

网址: www.mlbio.cn