

Anti-STAU2 antibody

Cat. No.	ml125208
Package	25 µl/100 µl/200 µl
Storage	-20°C, pH7.4 PBS, 0.05% NaN ₃ , 40% Glycerol

Product overview

Description	Anti-STAU2 rabbit polyclonal antibody
Applications	ELISA, IHC
Immunogen	Fusion protein of human STAU2
Reactivity	Human, Mouse, Rat
Content	1.02 mg/ml
Host species	Rabbit
Ig class	Immunogen-specific rabbit IgG
Purification	Antigen affinity purification

Target information

Symbol	STAU2
Full name	stau2 double-stranded RNA binding protein 2
Synonyms	39K2; 39K3
Swissprot	Q9NUL3

Target Background

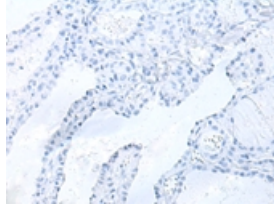
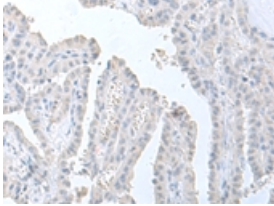
Staufen homolog 2 is a member of the family of double-stranded RNA (dsRNA)-binding proteins involved in the transport and/or localization of mRNAs to different subcellular compartments and/or organelles. These proteins are characterized by the presence of multiple dsRNA-binding domains which are required to bind RNAs having double-stranded secondary structures. Staufen homolog 2 shares 48.5% and 59.9% similarity with drosophila and human staufen, respectively. The exact function of Staufen homolog 2 is not known, but since it contains 3 copies of conserved dsRNA binding domain, it could be involved in double-stranded RNA binding events. Several transcript variants encoding different isoforms have been found for this gene.

订购热线: 4008-898-798

Applications

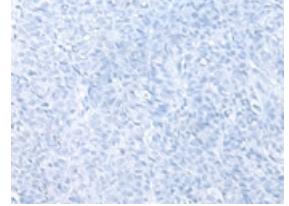
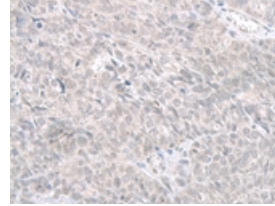
Immunohistochemistry

Predicted cell location: Cytoplasm or Nucleus
Positive control: Human thyroid cancer
Recommended dilution: 50-300



The image on the left is immunohistochemistry of paraffin-embedded Human thyroid cancer tissue using ml125208(STAU2 Antibody) at dilution 1/60, on the right is treated with fusion protein. (Original magnification: $\times 200$)

Predicted cell location: Cytoplasm or Nucleus
Positive control: Human ovarian cancer
Recommended dilution: 50-300



The image on the left is immunohistochemistry of paraffin-embedded Human ovarian cancer tissue using ml125208(STAU2 Antibody) at dilution 1/60, on the right is treated with fusion protein. (Original magnification: $\times 200$)

ELISA

Recommended dilution: 5000-10000

联系电话: 4008-898-798, 021-61725725

联系QQ: 2881505695, 2881505696

邮箱: mlbio_cn@yeah.net

网址: www.mlbio.cn