

Anti-SPIRE1 antibody

Cat. No.	ml125232
Package	25 µl/100 µl/200 µl
Storage	-20°C, pH7.4 PBS, 0.05% NaN ₃ , 40% Glycerol

Product overview

Description	Anti-SPIRE1 rabbit polyclonal antibody
Applications	ELISA, IHC
Immunogen	Fusion protein of human SPIRE1
Reactivity	Human, Mouse
Content	1.14 mg/ml
Host species	Rabbit
Ig class	Immunogen-specific rabbit IgG
Purification	Antigen affinity purification

Target information

Symbol	SPIRE1
Full name	spire type actin nucleation factor 1
Synonyms	Spir-1
Swissprot	Q08AE8

Target Background

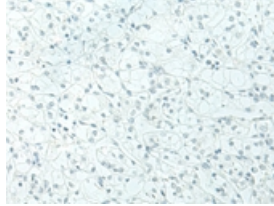
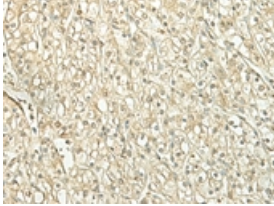
Spire proteins, such as SPIRE1, are highly conserved between species. They belong to the family of Wiskott-Aldrich homology region-2 (WH2) proteins, which are involved in actin organization (Kerkhoff et al., 2001 [PubMed 11747823]).

订购热线: 4008-898-798

Applications

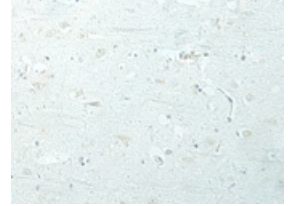
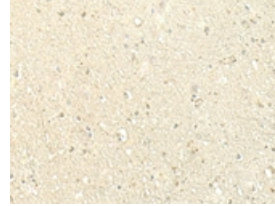
Immunohistochemistry

Predicted cell location: Nucleus or Cytoplasm
Positive control: Human kidney cancer
Recommended dilution: 50-300



The image on the left is immunohistochemistry of paraffin-embedded Human kidney cancer tissue using ml125232(SPIRE1 Antibody) at dilution 1/60, on the right is treated with fusion protein. (Original magnification: $\times 200$)

Predicted cell location: Nucleus or Cytoplasm
Positive control: Human brain
Recommended dilution: 50-300



The image on the left is immunohistochemistry of paraffin-embedded Human brain tissue using ml125232(SPIRE1 Antibody) at dilution 1/60, on the right is treated with fusion protein. (Original magnification: $\times 200$)

ELISA

Recommended dilution: 5000-10000

联系电话: 4008-898-798, 021-61725725

联系QQ: 2881505695, 2881505696

邮箱: mlbio_cn@yeah.net

网址: www.mlbio.cn