

Anti-SNRNP25 antibody

Cat. No.	ml125233
Package	25 µl/100 µl/200 µl
Storage	-20°C, pH7.4 PBS, 0.05% NaN ₃ , 40% Glycerol

Product overview

Description	Anti-SNRNP25 rabbit polyclonal antibody
Applications	ELISA, IHC
Immunogen	Fusion protein of human SNRNP25
Reactivity	Human, Mouse
Content	0.96 mg/ml
Host species	Rabbit
Ig class	Immunogen-specific rabbit IgG
Purification	Antigen affinity purification

Target information

Symbol	SNRNP25
Full name	small nuclear ribonucleoprotein U11/U12 subunit 25
Synonyms	C16orf33
Swissprot	Q9BV90

Target Background

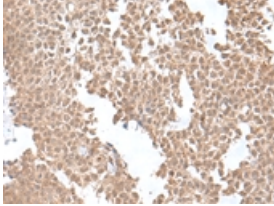
Two types of spliceosomes catalyze splicing of pre-mRNAs. The major U2-type spliceosome is found in all eukaryotes and removes U2-type introns, which represent more than 99% of pre-mRNA introns. The minor U12-type spliceosome is found in some eukaryotes and removes U12-type introns, which are rare and have distinct splice consensus signals. The U12-type spliceosome consists of several small nuclear RNAs and associated proteins. This gene encodes a 25K protein that is a component of the U12-type spliceosome.

订购热线: 4008-898-798

Applications

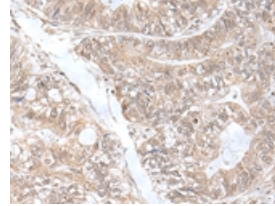
Immunohistochemistry

Predicted cell location: Cytoplasm and Nucleus
Positive control: Human ovarian cancer
Recommended dilution: 50-300



The image is immunohistochemistry of paraffin-embedded Human ovarian cancer tissue using ml125233(SNRNP25 Antibody) at dilution 1/55. (Original magnification: ×200)

Predicted cell location: Cytoplasm and Nucleus
Positive control: Human gastric cancer
Recommended dilution: 50-300



The image is immunohistochemistry of paraffin-embedded Human gastric cancer tissue using ml125233(SNRNP25 Antibody) at dilution 1/55. (Original magnification: ×200)

ELISA

Recommended dilution: 5000-10000

联系电话: 4008-898-798, 021-61725725

联系QQ: 2881505695, 2881505696

邮箱: mlbio_cn@yeah.net

网址: www.mlbio.cn