

## Anti-AP1S1 antibody

<b>Cat. No.</b>	ml125236
<b>Package</b>	25 µl/100 µl/200 µl
<b>Storage</b>	-20°C, pH7.4 PBS, 0.05% NaN <sub>3</sub> , 40% Glycerol

### Product overview

<b>Description</b>	Anti-AP1S1 rabbit polyclonal antibody
<b>Applications</b>	ELISA, IHC
<b>Immunogen</b>	Fusion protein of human AP1S1
<b>Reactivity</b>	Human, Mouse
<b>Content</b>	1.2 mg/ml
<b>Host species</b>	Rabbit
<b>Ig class</b>	Immunogen-specific rabbit IgG
<b>Purification</b>	Antigen affinity purification

### Target information

<b>Symbol</b>	AP1S1
<b>Full name</b>	adaptor related protein complex 1 sigma 1 subunit
<b>Synonyms</b>	AP19; EKV3; CLAPS1; MEDNIK; SIGMA1A
<b>Swissprot</b>	P61966

### Target Background

The protein encoded by this gene is part of the clathrin coat assembly complex which links clathrin to receptors in coated vesicles. These vesicles are involved in endocytosis and Golgi processing. This protein, as well as beta-prime-adaptin, gamma-adaptin, and the medium (mu) chain AP47, form the AP-1 assembly protein complex located at the Golgi vesicle.

订购热线: 4008-898-798

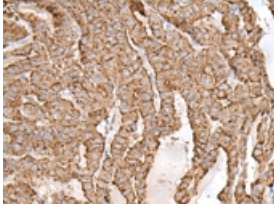
**Applications**

**Immunohistochemistry**

Predicted cell location: Cytoplasm

Positive control: Human thyroid cancer

Recommended dilution: 50-300



The image is immunohistochemistry of paraffin-embedded Human thyroid cancer tissue using ml125236(AP1S1 Antibody) at dilution 1/65. (Original magnification: ×200)

**ELISA**

Recommended dilution: 5000-10000

联系电话: 4008-898-798, 021-61725725

联系QQ: 2881505695, 2881505696

邮箱: [mlbio\\_cn@yeah.net](mailto:mlbio_cn@yeah.net)

网址: [www.mlbio.cn](http://www.mlbio.cn)