

Anti-ZC3H7A antibody

Cat. No.	ml125268
Package	25 µl/100 µl/200 µl
Storage	-20°C, pH7.4 PBS, 0.05% NaN ₃ , 40% Glycerol

Product overview

Description	Anti-ZC3H7A rabbit polyclonal antibody
Applications	ELISA, IHC
Immunogen	Fusion protein of human ZC3H7A
Reactivity	Human
Content	0.9 mg/ml
Host species	Rabbit
Ig class	Immunogen-specific rabbit IgG
Purification	Antigen affinity purification

Target information

Symbol	ZC3H7A
Full name	zinc finger CCCH-type containing 7A
Synonyms	ZC3H7; HSPC055; ZC3HDC7
Swissprot	Q8IWR0

Target Background

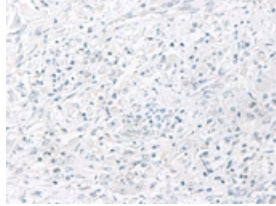
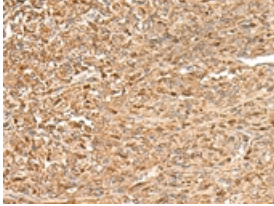
The zinc finger CCCH domain-containing protein 7A (ZC3H7A), also known as ZC3H7, HSPC055 or ZC3HDC7, is a 971 amino acid protein that contains a C3H1-type zinc finger domain, three C3H1-type zinc fingers and three TPR repeats. Belonging to the ZC3H12 family, ZC3H7A localizes to the nucleus. Existing as two alternatively spliced isoforms, ZC3H7A is encoded by a gene located on human chromosome 16p13.13. Chromosome 16 makes up nearly 3% of human cellular DNA and is associated with a variety of genetic disorders. The GAN gene is located on chromosome 16 and, with mutation, may lead to giant axonal neuropathy, a nervous system disorder characterized by increasing malfunction with growth. The rare disorder Rubinstein-Taybi syndrome is also associated with chromosome 16, though through the CREBBP gene which encodes a critical CREB binding protein. Signs of Rubinstein-Taybi include mental retardation and predisposition to tumor growth and white blood cell neoplasias. Crohn's disease is a gastrointestinal inflammatory condition associated with chromosome 16 through the NOD2 gene.

订购热线: 4008-898-798

Applications

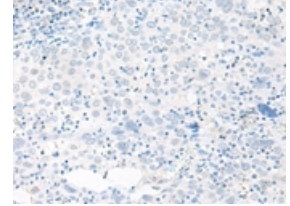
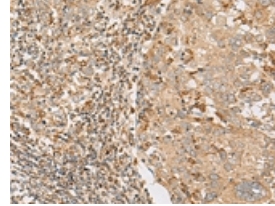
Immunohistochemistry

Predicted cell location: Cytoplasm
Positive control: Human liver cancer
Recommended dilution: 50-300



The image on the left is immunohistochemistry of paraffin-embedded Human liver cancer tissue using ml125268(ZC3H7A Antibody) at dilution 1/50, on the right is treated with fusion protein. (Original magnification: $\times 200$)

Predicted cell location: Cytoplasm
Positive control: Human cervical cancer
Recommended dilution: 50-300



The image on the left is immunohistochemistry of paraffin-embedded Human cervical cancer tissue using ml125268(ZC3H7A Antibody) at dilution 1/50, on the right is treated with fusion protein. (Original magnification: $\times 200$)

ELISA

Recommended dilution: 5000-10000

联系电话: 4008-898-798, 021-61725725

联系QQ: 2881505695, 2881505696

邮箱: mlbio_cn@yeah.net

网址: www.mlbio.cn