

Anti-JPT2 antibody

Cat. No. ml125294
Package 25 µl/100 µl/200 µl
Storage -20°C, pH7.4 PBS, 0.05% NaN₃, 40% Glycerol

Product overview

Description Anti-JPT2 rabbit polyclonal antibody
Applications ELISA, IHC
Immunogen Fusion protein of human JPT2
Reactivity Human
Content 1.44 mg/ml
Host species Rabbit
Ig class Immunogen-specific rabbit IgG
Purification Antigen affinity purification

Target information

Symbol JPT2
Full name Jupiter microtubule associated homolog 2
Synonyms L11; HN1L; C16orf34
Swissprot Q9H910

Target Background

The function of this protein remains unknown.

订购热线: 4008-898-798

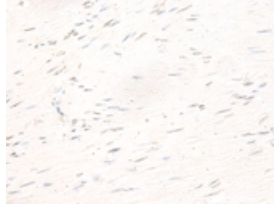
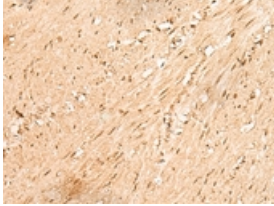
Applications

Immunohistochemistry

Predicted cell location: Cytoplasm and Nucleus

Positive control: Human colorectal cancer

Recommended dilution: 30-150



The image on the left is immunohistochemistry of paraffin-embedded Human colorectal cancer tissue using ml125294(JPT2 Antibody) at dilution 1/80, on the right is treated with fusion protein. (Original magnification: $\times 200$)

ELISA

Recommended dilution: 5000-10000

联系电话: 4008-898-798, 021-61725725

联系QQ: 2881505695, 2881505696

邮箱: mlbio_cn@yeah.net

网址: www.mlbio.cn