

Anti-MDFI antibody

Cat. No.	ml125356
Package	25 µl/100 µl/200 µl
Storage	-20°C, pH7.4 PBS, 0.05% NaN ₃ , 40% Glycerol

Product overview

Description	Anti-MDFI rabbit polyclonal antibody
Applications	ELISA, IHC
Immunogen	Fusion protein of human MDFI
Reactivity	Human, Rat
Content	0.84 mg/ml
Host species	Rabbit
Ig class	Immunogen-specific rabbit IgG
Purification	Antigen affinity purification

Target information

Symbol	MDFI
Full name	MyoD family inhibitor
Synonyms	I-MF; I-mfa
Swissprot	Q99750

Target Background

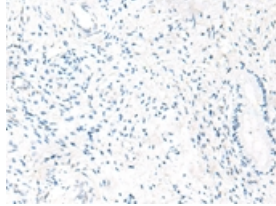
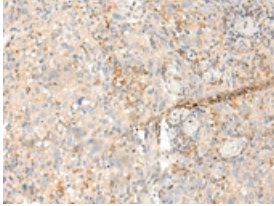
This protein is a transcription factor that negatively regulates other myogenic family proteins. Studies of the mouse homolog, I-mf, show that it interferes with myogenic factor function by masking nuclear localization signals and preventing DNA binding. Knockout mouse studies show defects in the formation of vertebrae and ribs that also involve cartilage formation in these structures.

订购热线: 4008-898-798

Applications

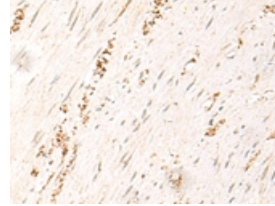
Immunohistochemistry

Predicted cell location: Cytoplasm or Nucleus
Positive control: Human cervical cancer
Recommended dilution: 50-300



The image on the left is immunohistochemistry of paraffin-embedded Human cervical cancer tissue using ml125356(MDFI Antibody) at dilution 1/50, on the right is treated with fusion protein. (Original magnification: $\times 200$)

Predicted cell location: Cytoplasm or Nucleus
Positive control: Human colorectal cancer
Recommended dilution: 50-300



The image on the left is immunohistochemistry of paraffin-embedded Human colorectal cancer tissue using ml125356(MDFI Antibody) at dilution 1/50, on the right is treated with fusion protein. (Original magnification: $\times 200$)

ELISA

Recommended dilution: 5000-10000

联系电话: 4008-898-798, 021-61725725

联系QQ: 2881505695, 2881505696

邮箱: mlbio_cn@yeah.net

网址: www.mlbio.cn