

Anti-ORC4 antibody

Cat. No.	ml125358
Package	25 µl/100 µl/200 µl
Storage	-20°C, pH7.4 PBS, 0.05% NaN ₃ , 40% Glycerol

Product overview

Description	Anti-ORC4 rabbit polyclonal antibody
Applications	ELISA, IHC
Immunogen	Fusion protein of human ORC4
Reactivity	Human, Mouse, Rat
Content	1.26 mg/ml
Host species	Rabbit
Ig class	Immunogen-specific rabbit IgG
Purification	Antigen affinity purification

Target information

Symbol	ORC4
Full name	origin recognition complex subunit 4
Synonyms	ORC4L; ORC4P
Swissprot	O43929

Target Background

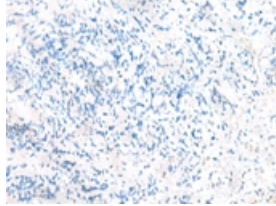
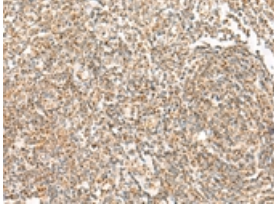
The origin recognition complex (ORC) is a highly conserved six subunit protein complex essential for the initiation of the DNA replication in eukaryotic cells. Studies in yeast demonstrated that ORC binds specifically to origins of replication and serves as a platform for the assembly of additional initiation factors such as Cdc6 and Mcm proteins. This gene encodes a subunit of the ORC complex. Several alternatively spliced transcript variants, some of which encode the same protein, have been reported for this gene.

订购热线: 4008-898-798

Applications

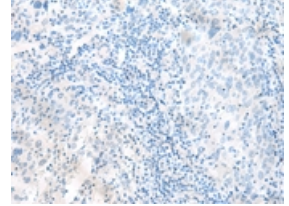
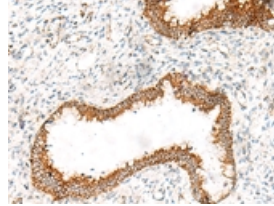
Immunohistochemistry

Predicted cell location: Nucleus and Cytoplasm
Positive control: Human tonsil
Recommended dilution: 40-200



The image on the left is immunohistochemistry of paraffin-embedded Human tonsil tissue using ml125358(ORC4 Antibody) at dilution 1/70, on the right is treated with fusion protein. (Original magnification: $\times 200$)

Predicted cell location: Nucleus and Cytoplasm
Positive control: Human cervical cancer
Recommended dilution: 40-200



The image on the left is immunohistochemistry of paraffin-embedded Human cervical cancer tissue using ml125358(ORC4 Antibody) at dilution 1/70, on the right is treated with fusion protein. (Original magnification: $\times 200$)

ELISA

Recommended dilution: 5000-10000

联系电话: 4008-898-798, 021-61725725

联系QQ: 2881505695, 2881505696

邮箱: mlbio_cn@yeah.net

网址: www.mlbio.cn